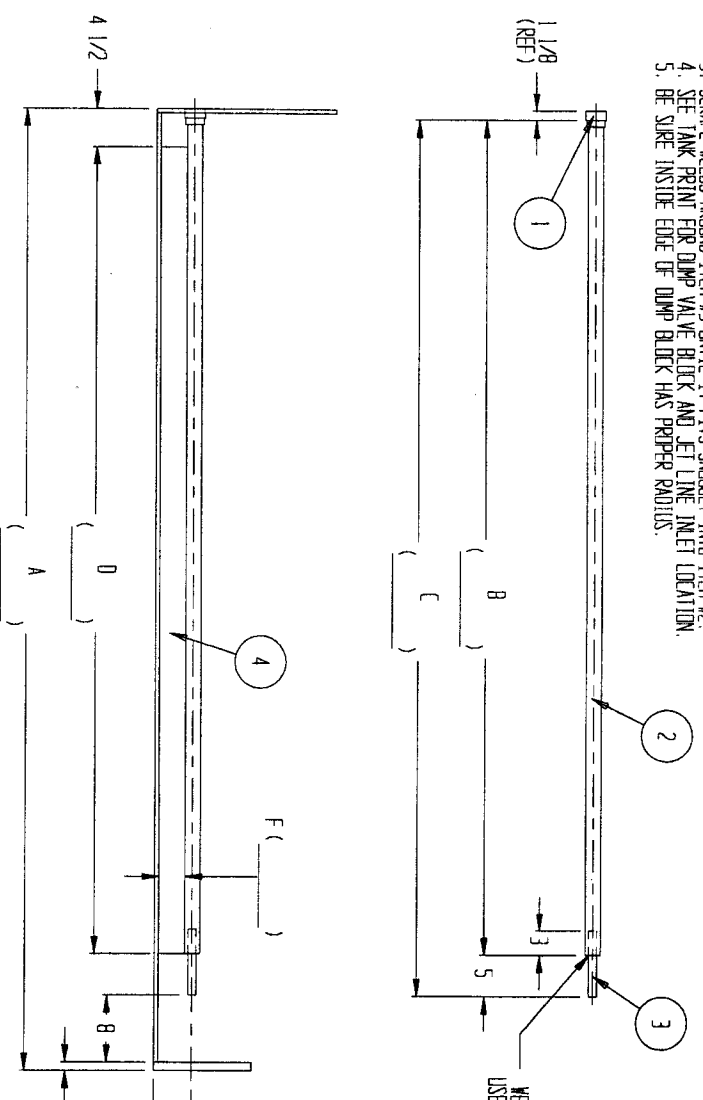
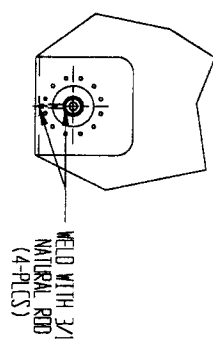
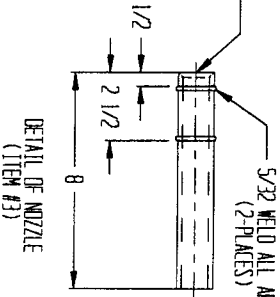


NOTES: 1. CUT ITEM #4 "O X F"  
 2. NOZZLE MUST BE ALIGNED WITH CENTER OF DUMP FLANGE HOLE.  
 3. SCRAP WELDS AROUND ITEM #3 UNTIL IT FITS SNUGLY INTO ITEM #2.  
 4. SEE TANK PRINT FOR DUMP VALVE BLOCK AND JET LINE INLET LOCATION.  
 5. BE SURE INSIDE EDGE OF DUMP BLOCK HAS PROPER RADII.



FULL GAMBER, INSIDE  
 END OF PIPE @ 45° END  
 WELD ALL AROUND  
 USE 5/32 BLACK ROD



- A = TANK BASE LENGTH
- B = A - (14 1/8 + G)
- C = B + 5
- D = B - 3 3/8
- E = DUMP CENTER FROM FLOOR
- F = E - 1 7/16
- G = BLOCK THICKNESS

MATERIAL:  
 THESE DIMENSIONS AND SPECIFICATIONS ARE TO BE USED FOR THE FABRICATION OF THIS ITEM. THE FABRICATOR SHALL BE RESPONSIBLE FOR THE PROPER FIT AND OPERATION OF THE ITEM. THE FABRICATOR SHALL BE RESPONSIBLE FOR THE PROPER FIT AND OPERATION OF THE ITEM. THE FABRICATOR SHALL BE RESPONSIBLE FOR THE PROPER FIT AND OPERATION OF THE ITEM.

REV	DATE	DESCRIPTION	BY	CHKD
1	12 DEC 97	INITIAL ISSUE		

4	121-001-013	SHEET, 1/2" PIPE - NATURAL	AS REQD
3	140-001-029	PIPE, P.P. - 1" SCH 80	8 LIN
2	140-001-011	PIPE, P.P. - 1 1/2" SCH 80	AS REQD
1	100-000	ADAPTER, FLANG - 1 1/2" PIPE X 1 1/2" PIPE	1 EA

UNITED PLASTIC FABRICATING, INC.	DATE	12 DEC 97
INSTALLATION, JET LINE (1 1/2" SIZE)	APP'D	<i>[Signature]</i>
(GENERAL)	CHKD	<i>[Signature]</i>

980-0020	1	1	1
----------	---	---	---