

4

3

DWG NO.

770-3290

SH

1

REV

M

2

1

POLYTANK III X

ITEM	Part No.	DESCRIPTION	QTY	UNITS	Ref No.	Ref Qty.
1	301-0784	PLATE TAPPING 2-HOLE, 5/8-11 x 2 w/ CAPS	2	ea	301-0784-000	2.00
2	NA	MOUNTING BLOCK, ASSY 4 HOLE (REF # 824-1034 FOR INFORMATION) SEE SHEET 2 FOR DETAIL	1	ea	NA	0.00
4	824-1034	MOUNTING BLOCK, ASSY 8 HOLE	1	ea	824-1034	1.00
5	990-1148	4" VENT/OVERFLOW PIPE	1	ea	140-1001-004	5.09
6	NA	HINGE	1	ea		0.00
7	NA	CUSTOM ASSEMBLY, FILL TOWER, SURGE WITH RETAINED LID (USE 824-1135 FOR HARDWARE)	1	ea	824-1135	1.00
8	824-0987	SCREEN, FILL TOWER	1	ea	NA	1.00
9	NA	3" NPT ADAPTER W/ DIP TUBE TANK SUCTION	1	ea	140-1001-003	0.97
10	824-1307	FILL MBF 1" NPTF BLACK, MOLDED	1	ea	170-1307-000	1.00
11	NA	MOUNTING BLOCK - SEE SH. 3 FOR DETAIL	6	ea		0.00
26	NA	3" NPT TAPPED THRU HOLE W/PLUG FOR TANK DRAIN O/C IN SUMP FLOOR	1	ea	NA	0.00
27	164-0005-009	PLUG, 3" PVC	1	ea	164-0005-009	1.00
28	824-1036	COVER PLATE, INTEGRATOR MOUNTING BLOCK	2	ea	NA	0.00
29	204-0003-005	TAPE, ALUMINUM FOIL, 7/16" WIDE	1	ea	204-0003-005	1.00
30	NA	3" HALF COUPLING (NPTF) TANK DRAIN w/ DOUNT (CUT TO BE FLUSH w/INSIDE SURFACE OF FLOOR)	1	ea	162-0007-000	0.50
31	199-0035	T-NUT w/ PRONG, 5/16" -18, S.S.	12	ea	199-0035-004	12.00
32	NA	2 1/2" NPT ADAPTER w/ DIVERTER PIPE, TANK FILL - SEE SHEET 4 FOR DETAIL	2	ea	NA	14.22
33	NA	HORIZONTAL MOUNTING FLANGE SEE SH. 3 FOR DETAIL	1	ea	NA	0.00
34	NA	VERTICAL MOUNTING FLANGE SEE SH. 3 FOR DETAIL	2	ea	NA	0.00

PROTECT DURING MANUFACTURING

SCRATCHES ON SIDE/FRONT WALLS ARE NOT ACCEPTABLE

MATERIAL: (THICKNESS VARIES)
 BLACK TEXTURED: SHELL, COVERS, FLOOR, TOWER, , EXTERNAL FLANGE RETURNS, EXTERNAL MOUNTING BLOCKS, SUMP

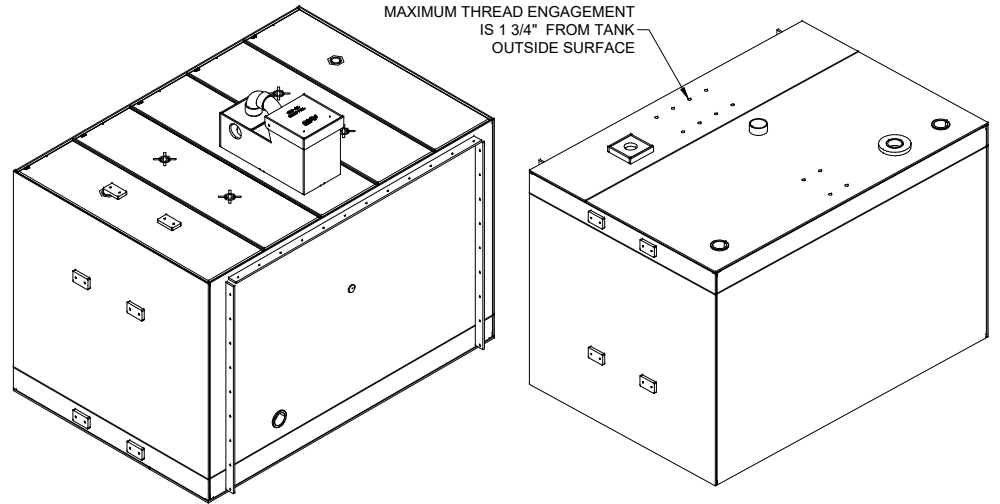
BLACK SMOOTH: TRANSVERSE, GUSSETS, I-FLANGES, MOUNTING BLOCK SUPPORTS, ANTI-SWIRL PLATE, LONGITUDINALS.

REVISIONS				
ZONE	REV	DESCRIPTION	DATE	APPROVED
	A	SEE ECN # C-7803	12/29/2016	RCM
	B	SEE ECN # C-7873	04/13/2017	RCM
	C	SEE ECN # C-8063	11/02/2017	RCM
	D	SEE ECN # C-8220	04/02/2018	RCM
	E	SEE ECN # C-8309	06/22/2018	SW
	F	SEE ECN # C-8345	08/03/2018	KV
	G	SEE ECN # C-8399	09/12/2018	SW
	H	SEE ECN # C-8630	04/23/2019	RC
	I	SEE ECN # C-8678	05/08/2019	MM
	J	SEE ECN # C-8800	08/16/2019	JAS
	K	SEE ECN # C-9489	06/18/2021	RC
	L	SEE ECN # C-9714	01/05/2022	RC
	M	SEE ECN # C-9880	05/18/2022	RC

POLY-TANK III NOTES:
 1.) THE WATER TOWER IS BLACK TEXTURED.
 2.) PUMP PANEL TAG TO BE SHIPPED WITH TANK.

ITEM	Part No.	DESCRIPTION	QTY	UNITS	Ref No.	Ref Qty.
13	824-0277-001	ADAPTER, 3" NPTF X 3" PIPE STUB	1	ea	170-0277-001	1.00
14	160-1082	3" ENFIELD COUPLING	3	ea	160-1082-000	3.00
15	160-1003	3" 90° ENFIELD ELBOW	5	ea	160-1003-000	5.00
17	160-1053	4" 45° ENFIELD ELBOW	2	ea	160-1053-000	2.00
18	824-0166	LIFTING PEG F: 275 LB	4	ea	180-0166-002	4.00
19	824-1333	HOLD DOWN PEG	2	ea	180-1333-000	2.00
20	321-0001	TYPE A STEEL	2	ea	321-0001	2.00
21	301-0004	ANGLE IRON 2" X 2" X 1/4" (3.19 LB/FT) ASTM A36 HRS	2	ea	301-0004	3.94
22	990-1008	ANTISWIRL PLATE INSTALLATION	1	ea	NA	0.00
23	140-1001-002	LEG, PIPE - 1 1/2" OR 2" PIPE IN EITHER SCH 40 OR SCH 80 WALL THICKNESS. LENGTH OF LEG 2 7/8"	4	ea	140-1001-002	0.96
24	160-1032	3" 90° ST ELBOW, ENFIELD	1	ea	160-1032-000	1.00
25	160-1102	3 x 3 x 3 TEE, ENFIELD - NOTE SWEEP DIRECTION	1	ea	160-1102-000	1.00
35	824-0175-001	ADAPTER, 2 1/2" NPTF X 3" PIPE STUB	2	ea	170-0657-000	2.00

****IMPORTANT NOTES:
SEE PAGE 4****



MATL	AS NOTED
COVS	FLUSH/DROP IN
GALLONS	1528
LITERS	
IMP GALS	
CALC WGT FULL (LBS.)	
V 15.22 - 2022-05-09	

THESE DRAWINGS AND SPECIFICATIONS ARE THE EXCLUSIVE PROPERTY OF UNITED PLASTICS FABRICATING, INC. ISSUED IN STRICT CONFIDENCE AND SHALL NOT BE DISCLOSED IN WHOLE OR IN PART TO ANY OTHER PARTY AND THAT IT SHALL NOT BE COPIED IN ANY FORM WITHOUT THE PRIOR WRITTEN PERMISSION OF UNITED PLASTICS FABRICATING, INC. ACCEPTANCE OF THIS COPY WILL BE CONSTRUED AS ACCEPTANCE OF THE FOREGOING CONDITION. POLY-TANK IS A REGISTERED TRADEMARK OF UNITED PLASTICS FABRICATING

TANK TO BE BUILT TO CURRENT UPF MANUFACTURING STANDARDS.

ADDITIONAL UPF STANDARDS APPLICABLE TO THIS TANK:

UNLESS OTHERWISE SPECIFIED, DIMENSIONS ARE IN INCHES
 TOLERANCES ARE AT AMBIENT TEMP. AT THE TIME OF MFG.
 FRACTIONS = ± 1/16 DECIMAL .XX = ± .030
 DECIMAL .XXX = ± .005

DO NOT SCALE DRAWING

CONTRACT NO.

DESIGNER	Ross Chapman	DATE	4/15/16
DRAWN	Ross Chapman		
CHECKED			
APPROVAL	SW	5/20/16	



END USER

GPM Pump Truck Parts LLC
 1500 Gal Rectangular Jetter POLY-TANK

SIZE	B	JOB NO.		DWG NO.	770-3290	REV.	M
SCALE	1:1	REF NO.		CALC WGT	1099	NET WGT	
				SHEET 1 OF 6			

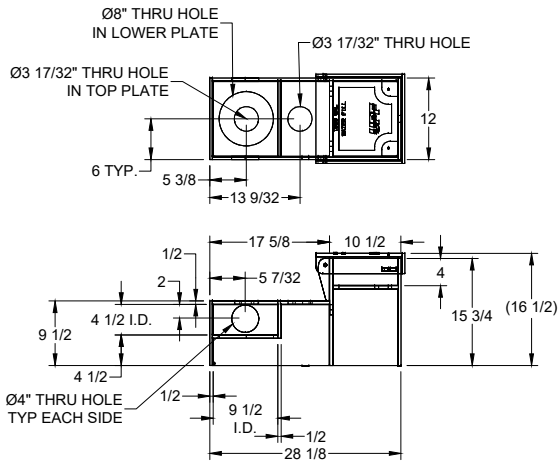
4

3

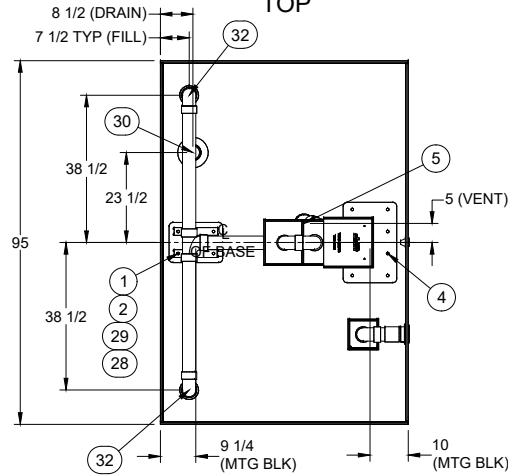
2

1

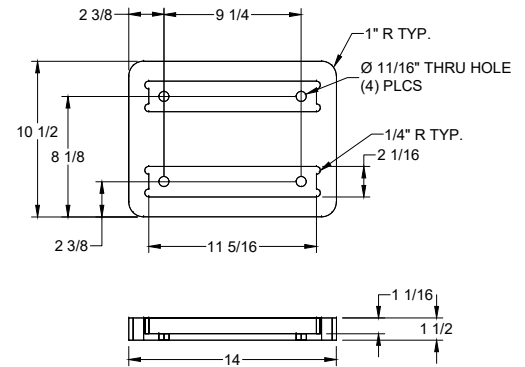
CUSTOM SURGE TOWER DETAIL



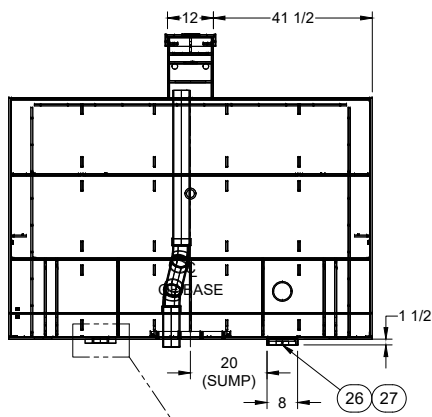
TOP



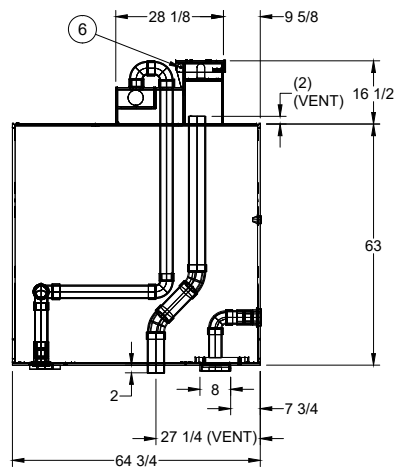
② MOUNTING BLOCK DETAIL



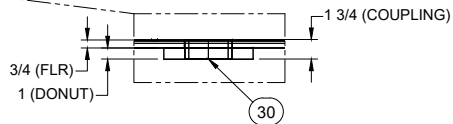
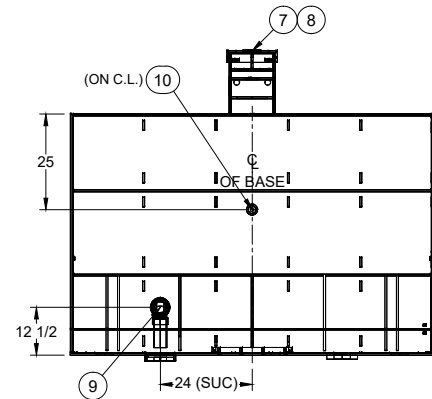
FRONT



SIDE



REAR

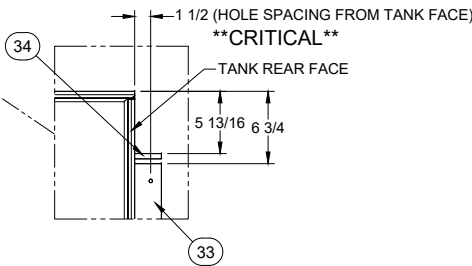
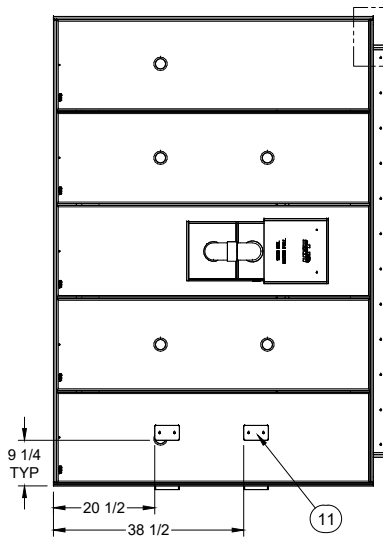


APPROVALS		DATE	TITLE	
DESIGNER	Ross Chapman	4/15/16	GPM Pump Truck Parts LLC 1500 Gal Rectangular Jetter POLY-TANK	
DRAWN	Ross Chapman		Water Print	
CHECKED			SIZE	JOB NO.
APPROVAL	SW	5/20/16	B	
			DWG NO.	REV.
			770-3290	M
SCALE	1:1	REF NO.	CALC WGT	PCT WGT
			1099	
			SHEET	2 OF 6



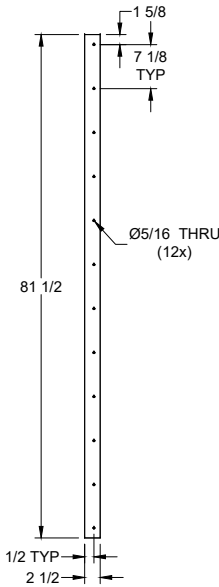
END USER

TOP



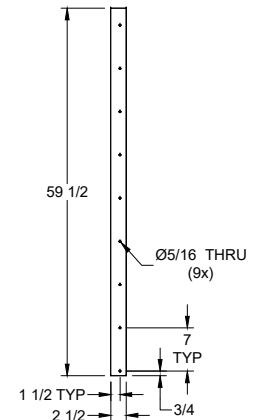
33 HORIZONTAL MOUNTING FLANGE

TOP VIEW
←--FRONT
MATERIAL: 1/2" BLACK TEXTURED

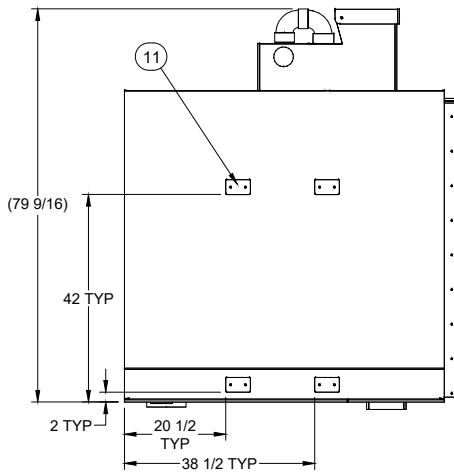


34 VERTICAL MOUNTING FLANGE (2x)

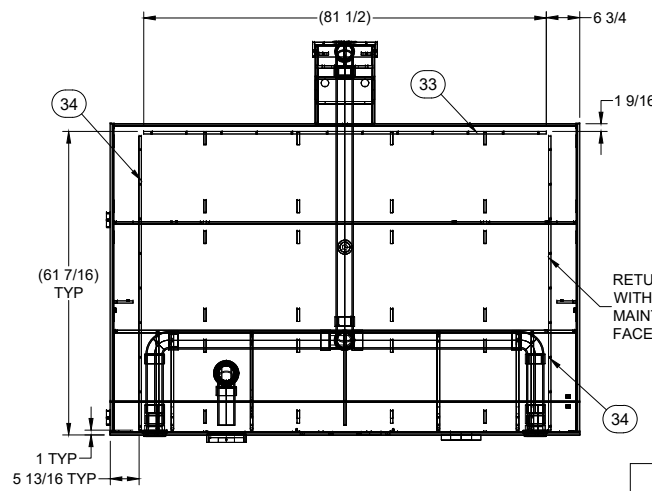
SIDE VIEW
←--FRONT
MATERIAL: 1/2" BLACK TEXTURED



DRIVER

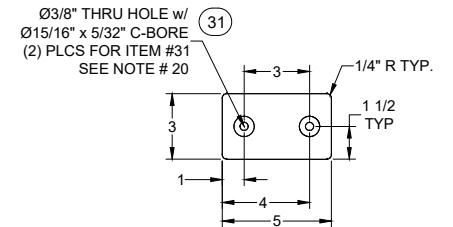


REAR



RETURN FLANGE (3) PLCS WITH Ø5/16" THRU HOLES. MAINTAIN AT 90° TO TANK FACE DURING WELDING

11 BLOCK 2-HOLE DETAIL
MATERIAL: 3/4" BLK TEXTURED
QUANTITY: (6)



END USER

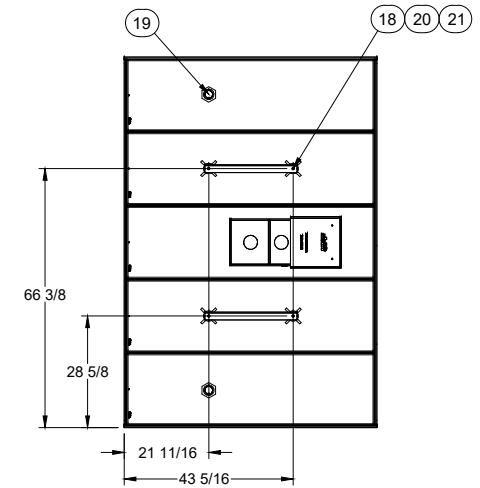
GPM Pump Truck Parts LLC
1500 Gal Rectangular Jetter POLY-TANK

APPROVALS		DATE	TITLE	
DESIGNER	Ross Chapman	4/15/16	GPM Pump Truck Parts LLC 1500 Gal Rectangular Jetter POLY-TANK	
DRAWN	Ross Chapman		Externals Print	
CHECKED			SIZE	JOB NO.
APPROVAL	SW	5/20/16	B	
			SCALE	REF NO.
			1:1	
			CALC WGT	NET WGT
			1099	
			DWG NO.	REV.
			770-3290	M
			SHEET	OF
			3	6

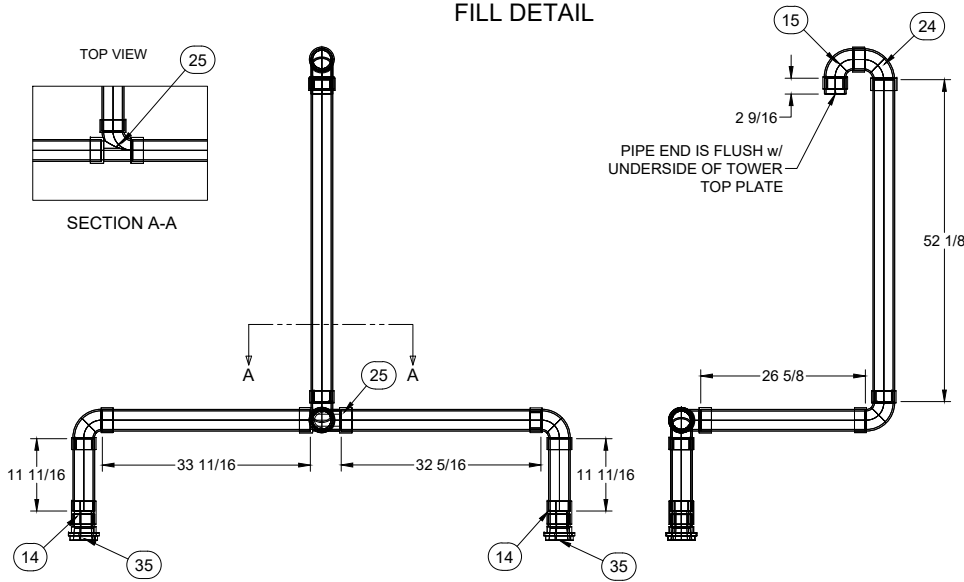
NOTES:

- 1.) ALL FINISHED EDGES TO HAVE 1/8" RADIUS.
- 2.) SMOOTH ALL EXTERIOR WELDS.
- 3.) USED ON 775-0105
- 4.) PROTECT ALL SIDES COMPLETELY DURING MANUFACTURING USING CARDBOARD.
- 5.) ALL EXTERNAL TANK SHELL SIDES SHALL BE FREE OF MATERIAL AND MFG. DEFECTS. SCRATCHES AND GOUGES ARE NOT ACCEPTABLE TO CUSTOMER.
- 6.) SIDE WALLS, FRONT AND REAR WALLS AND FLOOR TO BE 3/4" THK.
- 7.) EXTRUSION WELD SHELL EXTERIOR AS NOTED
- 8.) ONLY MACHINED BUTT WELDS PERMITTED ON TANK SHELL AS SHOWN WITH A BUTT WELD TOLERANCE OF ±0.05" ON FINISHED SIDE.
- 9.) APPLY FOIL TAPE TO 3/4" MATERIAL AS REQUIRED FOR SPARK TEST
- 10.) TANK SIDE WALLS TO CAP ENDS.
- 11.) PEGS INITIALLY EXTEND 1/16" ABOVE COVERS. AFTER PEGS ARE WELDED TO COVER, MACHINE PEGS TO BE FLUSH WITH COVER.
- 12.) CL MEASURED FROM BASE OF TANK
- 13.) LABEL LOCATION, REF 990-1027
- 14.) APPLY SERIAL NUMBER PER 990-1030
- 15.) ETCHING LOCATION, REF SHEET 2 OF 990-1028
- 16.) MOUNTING BLOCK ASSEMBLY 824-1034 MUST BE WELDED TO THE INTERNAL TANK STRUCTURE. DO NOT WELD ANY COMPONENT TO THE MOUNTING BLOCK COVER PLATE 824-1036
- 17.) ALL PIPE TO BE SCHEDULE 40 UNLESS OTHERWISE NOTED
- 18.) ALL WELDS THAT ARE EXTERNALLY VISIBLE ARE TO BE SMOOTH AND WITHOUT VOIDS, SCRATCHES OR CRACKS WHEN VISUALLY INSPECTED UNAIDED BY MAGNIFICATION. FILLET WELDS SHOULD BE A SEAMLESS TRANSITION FROM ONE COMPONENT PART TO THE ADJOINING COMPONENT PART. NO SLAG OR FILLER IS PERMITTED TO BE MORE THAN 0.03 INCHES ABOVE NOR MAY THEY FALL BELOW THE ADJOINED SURFACE OF FLUSH WELDS.
- 19.) TANK FLOOR REQUIRES POCKETS TO ACCEPT MOUNTING BLOCKS SO THAT MOUNTING HARDWARE CAN ATTACH TO TANK WITH PROPER BOLT THREAD ENGAGEMENT
- 20.) INSERT ITEM #31 INTO ITEM #11 FROM C-BORE SIDE OF BLOCK. HAMMER FLUSH TO SET PRONGS INTO BLOCK. INSTALL TO TANK SURFACE IN LOCATIONS SHOWN WITH C-BORE SIDE TO TANK FACE.
- 21.) USE CAUTION WHEN HANDLING SIDE WALLS AND FRONT WALL DURING INITIAL CUTTING ON CNC. DO NOT SCRATCH EXTERIOR SURFACE DURING HANDLING.
- 22.) SEE 775-0105 FOR SHIPPING INSTRUCTIONS.

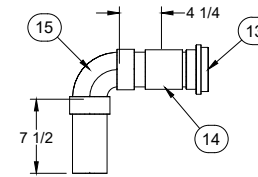
LIFTING DETAIL



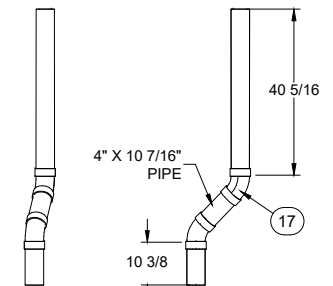
FILL DETAIL



SUCTION PIPE



VENT/OVERFLOW



APPROVALS		DATE	TITLE			
DESIGNER	Ross Chapman	4/15/16	GPM Pump Truck Parts LLC 1500 Gal Rectangular Jetter POLY-TANK			
DRAWN	Ross Chapman		Details Print			
CHECKED			SIZE	JOB NO.	DWG NO.	REV.
APPROVAL	SW	5/20/16	B		770-3290	M
			SCALE	REF NO.	CALC WGT	NET WGT
			1:1		1099	
					SHEET	4 OF 6

4

3

DWG NO.

770-3290

SH 6

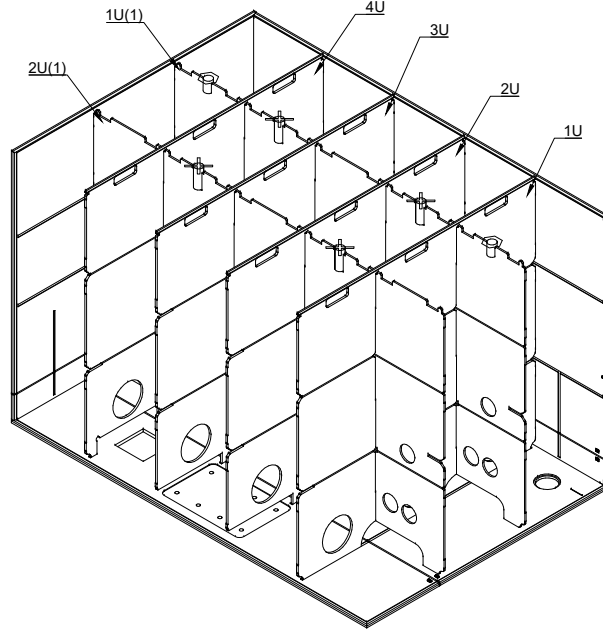
REV M

2

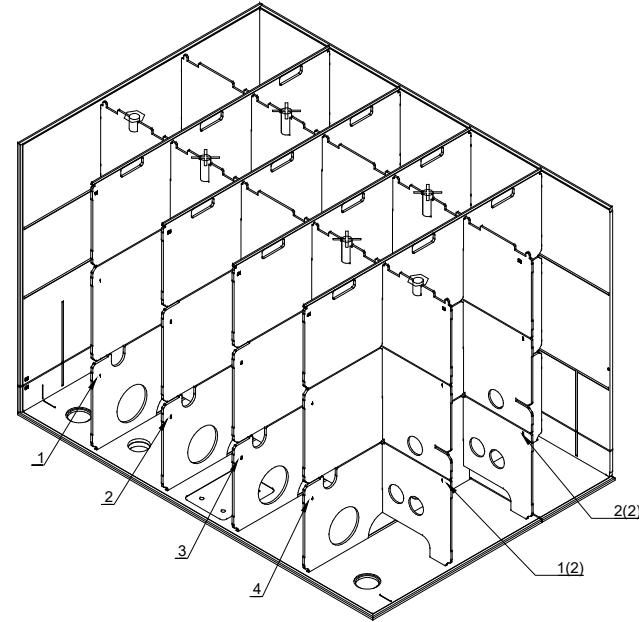
1

POLYTANK III X

REAR PASSENGER



FRONT DRIVER



APPROVALS		DATE	TITLE			
DESIGNER	Ross Chapman	4/15/16	GPM Pump Truck Parts LLC			
DRAWN	Ross Chapman		1500 Gal Rectangular Jetter POLY-TANK			
CHECKED			Support Print			
APPROVAL	SW	5/20/16	SIZE B	JOB NO.	DWG NO. 770-3290	REV. M
			SCALE 1:1	REF NO.	CALC WGT 1099	NET WGT
					SHEET 6	OF 6

4

3

2

1