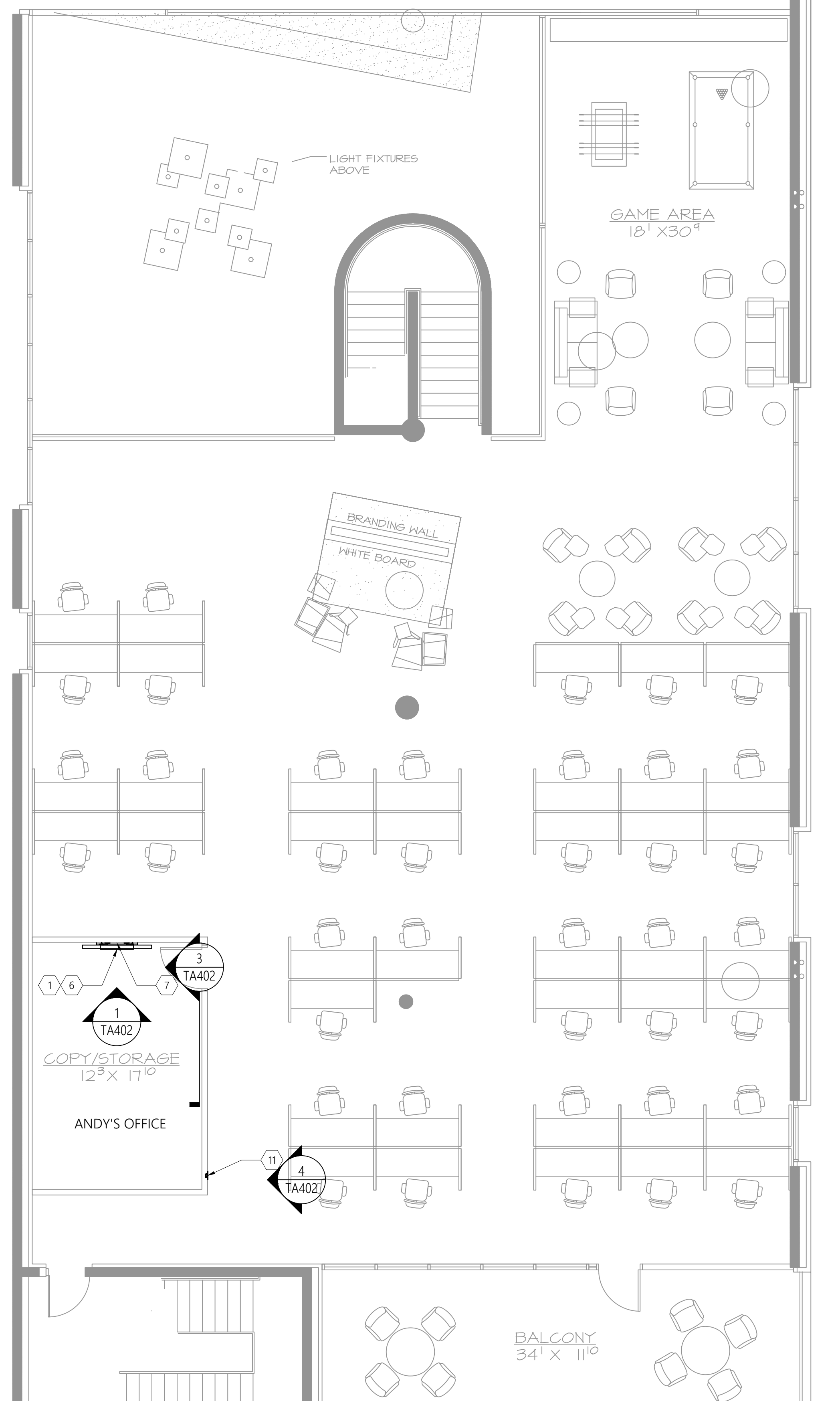


# 1 BUILDING C GENERAL EQUIPMENT LAYOUT

Scale: 3/16" = 1'-0"



## GENERAL NOTES

- A. ALL POWER, DATA TO BE PROVIDED BY OTHERS.
- B. VIDEO CONFERENCING LIGHTING SHOULD BE 55 FC AT 45° AND DIRECTED TO CAMERA.
- C. THE AV SYSTEM SHOULD RECEIVE A SINGLE PHASE FEED THAT IS PROPERLY GROUNDED.

## SHEET KEYNOTES

1. FLAT PANEL DISPLAY ON MOUNT.
2. CEILING MICROPHONE. APPROXIMATE LOCATION. FIELD DETERMINE OPTIMUM LOCATION BASED ON CEILING AND OBSTRUCTIONS.
3. CEILING SPEAKERS APPROXIMATE LOCATION. FIELD DETERMINE OPTIMUM LOCATION BASED ON CEILING AND OBSTRUCTIONS.
4. PTZ CAMERA BELOW DISPLAYS
5. HDMI RECEIVER MOUNTED BELOW TABLE.
6. HDMI INPUT MOUNTED BELOW DISPLAY.
7. ALL-IN-ONE CONFERENCE BAR BELOW DISPLAY.
8. 120VAC DUPLEX BY OTHERS BEHIND DISPLAY (MIGHT BE EXISTING)
9. DATA BY OTHERS BEHIND DISPLAY.
10. FLOORBOX WITH PATHWAY TO ACCESSIBLE CEILING.
11. SCHEDULING PANEL - VERIFY LOCATION, VERIFY DRYWALL FOR MOUNTING.
12. DATA BY OTHERS FOR SCHEDULING PANEL.



955 E. Javelina Avenue  
Mesa, Arizona 85204  
T: 480.892.1071  
F: 480.892.5295  
[www.L3AV.com](http://www.L3AV.com)

SNAPNURSE

CLIENT:

SCOTTSDALE OFFICE AV  
UPGRADE

PROJECT NAME:

7350 E EVANS RD  
SCOTTSDALE, AZ  
85260

SITE ADDRESS:

[illegible]

ISSUED FOR:

PROJECT NO.:	5888
--------------	------

SCALE: NTS

DRAWN BY: S. WILCOX

APPROVED BY:

BUILDING: C

FLOOR:

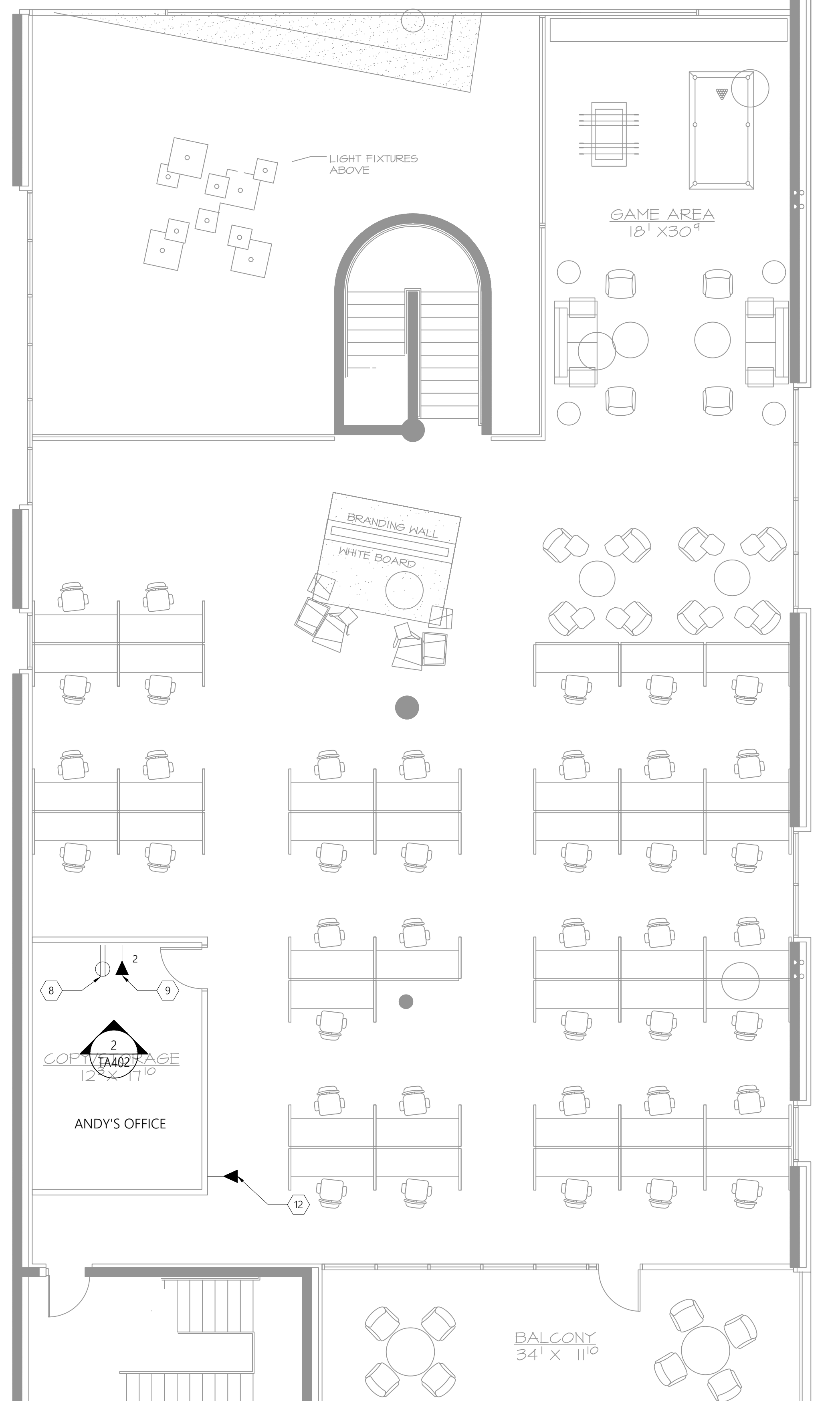
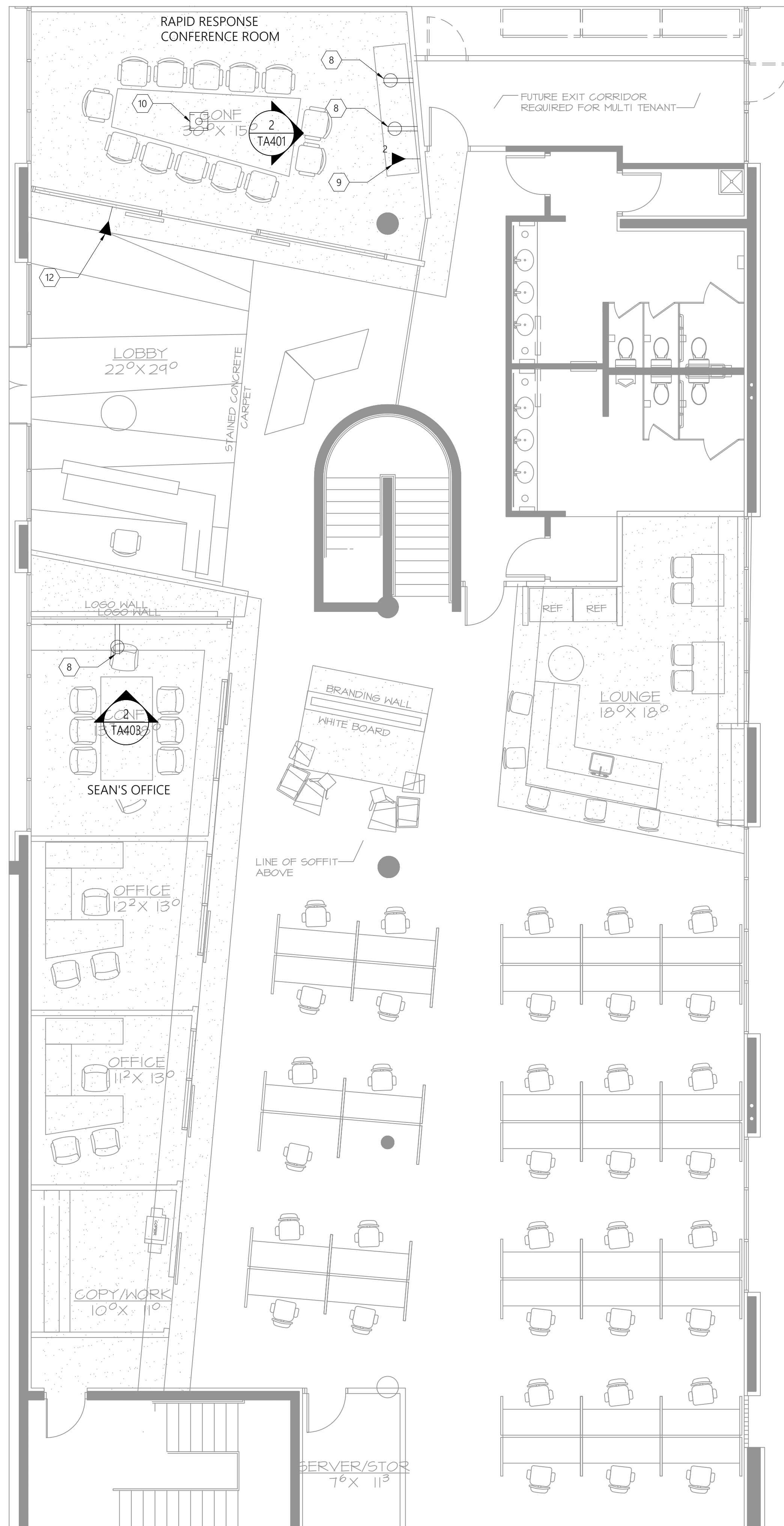
ROOM: BLDG C OVERALL

## AV OVERALL PLAN VIEWS

SHEET TITLE

# TA101

SHEET NUMBER:



## GENERAL NOTES

- A. ALL POWER, DATA TO BE PROVIDED BY OTHERS.
- B. VIDEO CONFERENCING LIGHTING SHOULD BE 55 FC AT 45° AND DIRECTED TO CAMERA.
- C. THE AV SYSTEM SHOULD RECEIVE A SINGLE PHASE FEED THAT IS PROPERLY GROUNDED.

## SHEET KEYNOTES

1. FLAT PANEL DISPLAY ON MOUNT.
2. CEILING MICROPHONE. APPROXIMATE LOCATION. FIELD DETERMINE OPTIMUM LOCATION BASED ON CEILING AND OBSTRUCTIONS.
3. CEILING SPEAKERS APPROXIMATE LOCATION. FIELD DETERMINE OPTIMUM LOCATION BASED ON CEILING AND OBSTRUCTIONS.
4. PTZ CAMERA BELOW DISPLAYS
5. HDMI RECEIVER MOUNTED BELOW TABLE.
6. HDMI INPUT MOUNTED BELOW DISPLAY.
7. ALL-IN-ONE CONFERENCE BAR BELOW DISPLAY.
8. 120VAC DUPLEX BY OTHERS BEHIND DISPLAY (MIGHT BE EXISTING)
9. DATA BY OTHERS BEHIND DISPLAY.
10. FLOORBOX WITH PATHWAY TO ACCESSIBLE CEILING.
11. SCHEDULING PANEL - VERIFY LOCATION, VERIFY DRYWALL FOR MOUNTING.
12. DATA BY OTHERS FOR SCHEDULING PANEL.



955 E. Javelina Avenue  
Mesa, Arizona 85204  
T: 480.892.1071  
F: 480.892.5295  
[www.L3AV.com](http://www.L3AV.com)

SNAPNURSE

CLIENT:

SCOTTSDALE OFFICE AV  
UPGRADE

PROJECT NAME:

7350 E EVANS RD  
SCOTTSDALE, AZ  
85260

SITE ADDRESS:

[illegible]

ISSUED FOR:

PROJECT NO.:	5888
--------------	------

SCALE: NTS

DRAWN BY: S. WILCOX

APPROVED BY:

BUILDING: C

FLOOR:

ROOM: BLDG C OVERALL

## AV OVERALL PLAN VIEWS

SHEET TITLE

TA102

SHEET NUMBER:

©2022 LEVEL 3 AUDIO VISUAL

1

BUILDING C GENERAL FACILITY CALL-OUT

Scale: 3/16" = 1'-0"

A

---

PLOT DATE: 5/3/2022 2:52 PM



- A. ALL POWER, DATA TO BE PROVIDED BY OTHERS.
- B. VIDEO CONFERENCING LIGHTING SHOULD BE 55 FC AT 45° AND DIRECTED TO CAMERA.
- C. THE AV SYSTEM SHOULD RECEIVE A SINGLE PHASE FEED THAT IS PROPERLY GROUNDED.

1. FLAT PANEL DISPLAY ON MOUNT.
2. CEILING MICROPHONE. APPROXIMATE LOCATION. FIELD DETERMINE OPTIMUM LOCATION BASED ON CEILING AND OBSTRUCTIONS.
3. CEILING SPEAKERS APPROXIMATE LOCATION. FIELD DETERMINE OPTIMUM LOCATION BASED ON CEILING AND OBSTRUCTIONS.
4. PTZ CAMERA BELOW DISPLAYS
5. HDMI RECEIVER MOUNTED BELOW TABLE.
6. HDMI INPUT MOUNTED BELOW DISPLAY.
7. ALL-IN-ONE CONFERENCE BAR BELOW DISPLAY.
8. 120VAC DUPLEX BY OTHERS BEHIND DISPLAY (MIGHT BE EXISTING)
9. DATA BY OTHERS BEHIND DISPLAY.
10. FLOORBOX WITH PATHWAY TO ACCESSIBLE CEILING.
11. SCHEDULING PANEL - VERIFY LOCATION, VERIFY DRYWALL FOR MOUNTING.
12. DATA BY OTHERS FOR SCHEDULING PANEL.



CLIENT:

SCOTTSDALE OFFICE AV  
UPGRADE

PROJECT NAME:

7350 E EVANS RD  
SCOTTSDALE, AZ  
85260

SITE ADDRESS:

[illegible]

ISSUED FOR:

PROJECT NO.:	5888
--------------	------

SCALE: NTS

DRAWN BY: S. WILCOX

APPROVED BY:

BUILDING:	A
-----------	---

FLOOR:

ROOM: BLDG A OVERALL

## SHEET TITLE

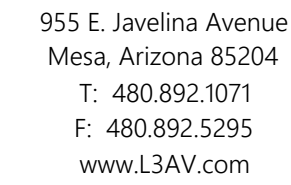
SHEET NUMBER:

Scale: 3/16" = 1'-0"



- A. ALL POWER, DATA TO BE PROVIDED BY OTHERS.
- B. VIDEO CONFERENCING LIGHTING SHOULD BE 55 FC AT 45° AND DIRECTED TO CAMERA.
- C. THE AV SYSTEM SHOULD RECEIVE A SINGLE PHASE FEED THAT IS PROPERLY GROUNDED.

1. FLAT PANEL DISPLAY ON MOUNT.
2. CEILING MICROPHONE. APPROXIMATE LOCATION. FIELD DETERMINE OPTIMUM LOCATION BASED ON CEILING AND OBSTRUCTIONS.
3. CEILING SPEAKERS APPROXIMATE LOCATION. FIELD DETERMINE OPTIMUM LOCATION BASED ON CEILING AND OBSTRUCTIONS.
4. PTZ CAMERA BELOW DISPLAYS
5. HDMI RECEIVER MOUNTED BELOW TABLE.
6. HDMI INPUT MOUNTED BELOW DISPLAY.
7. ALL-IN-ONE CONFERENCE BAR BELOW DISPLAY.
8. 120VAC DUPLEX BY OTHERS BEHIND DISPLAY (MIGHT BE EXISTING)
9. DATA BY OTHERS BEHIND DISPLAY.
10. FLOORBOX WITH PATHWAY TO ACCESSIBLE CEILING.
11. SCHEDULING PANEL - VERIFY LOCATION, VERIFY DRYWALL FOR MOUNTING.
12. DATA BY OTHERS FOR SCHEDULING PANEL.



CLIENT:

PROJECT NAME:

SITE ADDRESS:

[illegible]

ISSUED FOR:

PROJECT NO.:	5888
--------------	------

SCALE: NTS

DRAWN BY: S. WILCOX

APPROVED BY:

BUILDING: A

FLOOR:

ROOM: BLDG A OVERALL

SHEET TITLE

SHEET NUMBER:

Scale: 3/16" = 1'-0"