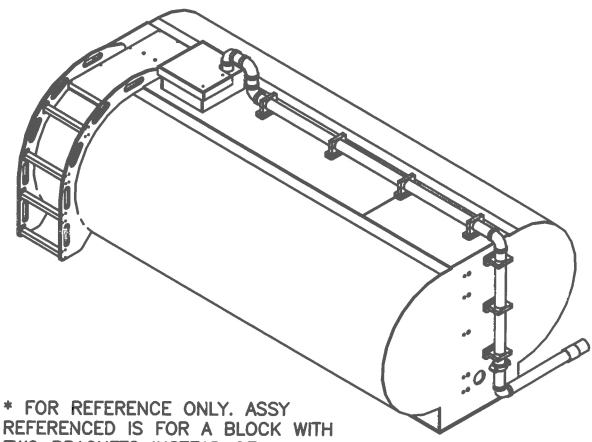
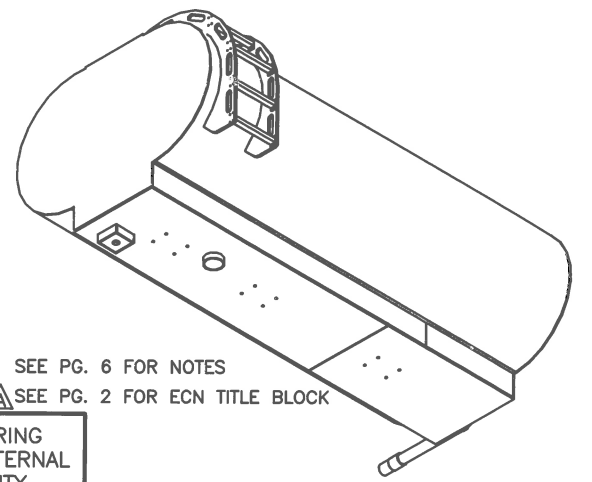


4				3				DWG. NO. 773-0080		REV. 1 A		2		1		POLYTANK III	
ITEM	PART NO.	DESCRIPTION	QTY.	U/M	ITEM	PART NO.	DESCRIPTION	QTY.	U/M								
1	NA	HINGE - FRONT	1	EA	39	NA	FRONT-DRIVER CORNER FLANGE (SEE DETAIL)	1	EA								
2	824-1044	INSTALLATION, TOWER HARDWARE. REMOVABLE TYPE TOWER LIDS	1	EA	40	NA	FRONT-PASSENGER CORNER FLANGE (SEE DETAIL)	1	EA								
3	NA	#6" X 64 3/4" LG VENT/OVERFLOW PIPE	1	EA	41	NA	REAR-DRIVER CORNER FLANGE (SEE DETAIL)	1	EA								
4	772-0059	KIT, TANK INSTALLATION STD 4-BOLT	1	EA	42	NA	REAR-PASSENGER CORNER FLANGE (SEE DETAIL)	1	EA								
5	NA	MOUNTING BLOCK, 4-BOLT	3	EA	43	990-1027	PROCEDURE, LABEL FOR ELLIP-T-TANKS	1	EA								
6	NA	2 1/2" X 3" NPT ADAPTER W/ PIPE PLUMBED THRU FILL TOWER FOR TANK FILL	1	EA	44	NA	INTERNAL FLANGE 21 61/64" X 1/2" X 4" \triangle	3	EA								
7	NA	1" FNPT THRU HOLE	5	EA	45	772-0084	KIT, ELLIPTICAL LIFTING	1	EA								
8	NA	2" NPT TAPPED THRU HOLE FOR TANK DRAIN OC	1	EA	46	164-0005-007	PLUG, PVC 2"	1	EA								
9	NA	MOUNTING BLOCK, 8" X 3" X 1"	7	EA	47	824-1034	ASSY, INTERNAL MOUNTING BLOCK, INTEGRATOR *	3	EA								
10	NA	3" FNPT TANK SUCTION W/ DIP TUBE	1	EA	48	824-0784	PLATE, TAPPING 2-HOLES 5/8-11 X 2 W/ CAPS	6	EA								
11	200-0019-004	INSERT, BRASS 1/4"-20	14	EA	49	204-0003-005	TAPE ALUMINUM FOIL 7/16 WIDE	A/R	EA								
12	NA	1/2" FNPT THRU HOLE	5	EA	50	824-1036	COVER PLATE, INTEGRATOR MOUNTING BLOCK	6	EA								
13	MMC 3015T417	3" VIBRATION DAMPING CLAMP	7	EA	51	287-0014	STEP COVER, 1/8" NON-SLIP ALUM DIA. PLATE	1	EA								
14	MMC 93190A566	1/4"-20 X 5 1/2" LG SS. HEX HEAD SCREW, FULLY THREADED	14	EA	52	200-0020-003	SCREW, SS SHEET METAL #10 X 1/2" PHILLIPS PAN HD	9	EA								
15	MMC 96659A108	1/4" X 5/8" OD SS FLAT WASHER - SAE \triangle	14	EA	53	NA	MOUNTING BRACKET, 6" X 4" X 1/2" ANGLE (SEE PG 4)	8	EA								
16	MMC 92147A029	1/4" X 0.487" OD SS SPLIT LOCK WASHER	14	EA	54	NA	SUBFRAME WELDMENT (SEE PG 4)	1	EA								
17	280-0011-004	3" VICTAULIC FLEXIBLE COUPLING - STYLE 75	1	EA	55	NA	NEOPRENE RUBBER, BLACK-70D 1/2" X 2" X 157 1/2"	2	EA								
18	824-1197	LADDER RUNG WELDMENT - 17"	4	EA	56	NA	NEOPRENE RUBBER, BLACK-70D 1/2" X 2" X 29"	10	EA								
19	MMC 91770A544	1/4"-20 X 1 1/4" LG SS PHILLIPS TRUSS HEAD SCREW	32	EA	57	NA	NEOPRENE RUBBER, BLACK-70D 1/2" X 2" X 20 1/2"	1	EA								
20	MMC 90101A230	1/4"-20 SS NYLON-INSERT THIN HEX LOCKNUT	32	EA	58	NA	NEOPRENE RUBBER, BLACK-70D 1/2" X 2" X 22 1/4"	1	EA								
21	160-0003	3" 90° ELBOW	6	EA	59	NA	NEOPRENE RUBBER, BLACK-70D 1/2" X 2" X 14 1/2"	1	EA								
22	-	-	-	-	60	200-0121-005	RIVET, BLIND SS #3/16" X 0.63 - 0.75 CRIMP RANGE	78	EA								
23	824-0277	ADAPTER, 3" NPT X 3" PIPE STUB	1	EA	61	MMC 92316A802	SCREW, FLANGED HEAD GR-8 5/8"-11 X 2" FULL THD'D	14	EA								
24	160-0082	3" FS SLEEVE COUPLING	2	EA	62	MMC 90949A110	NUT, GR-8 OVAL LOCK W/ FLANGE 5/8"-11	14	EA								
25	824-0657	ADAPTER, 2 1/2" NPTF X 3" MALE PIPE STUB	1	EA	63	MMC 92620A811	SCREW, HEX CAP GRADE 5 5/8"-11 X 5" LG	2	EA								
26	NA	LONGITUDINAL	3	EA	64	MMC 9584K69	SPRING COMPRESSION - 1 1/4" OD X 5/8" ROD X 3" LG 307 LOAD @ 20% DEFLECTION	2	EA								
27	NA	TRANSVERSE	6	EA	65	MMC 98125A445	WASHER, FLAT - THICK 5/8" X 1 5/16" X 0.19"-0.24"	2	EA								
28	NA	INTERNAL FLANGE 102" X 1/2" X 4"	2	EA	66	MMC 97135A270	NUT, NYLON LOCK 5/8"-11 GR 5 PLATED	2	EA								
29	NA	INTERNAL FLANGE 156 21/32" X 1/2" X 4"	4	EA													
30	NA	SUPPORT GUSSET 8 1/2" X 6"	14	EA													
31	NA	LIFTING BAR 19 5/8" X 1/2" X 12"	1	EA													
32	NA	LIFTING BAR 19 5/8" X 1/2" X 12"	1	EA													
33	NA	SUPPORT GUSSET 8" X 6"	1	EA													
34	NA	INTERNAL FLANGE 24 1/2" X 1/2" X 6"	6	EA													
35	NA	INTERNAL FLANGE 18 3/4" X 1/2" X 6"	8	EA													
36	NA	INTERNAL FLANGE 9 23/32" X 1/2" X 6"	4	EA													
37	NA	INTERNAL FLANGE 19" X 1/2" X 6"	4	EA													
38	-	-	-	-													



* FOR REFERENCE ONLY. ASSY REFERENCED IS FOR A BLOCK WITH TWO BRACKETS INSTEAD OF 1




SEE PG. 6 FOR NOTES
 \triangle SEE PG. 2 FOR ECN TITLE BLOCK

FINISHED PRODUCT - PROTECT DURING MANUFACTURING. ALL WELDING ON EXTERNAL OF TANK MUST BE OF HIGH QUALITY

ENGINEERING EST. CAPACITY 2531 GALLONS

UNLESS OTHERWISE SPECIFIED, DIMENSIONS ARE IN INCHES TOLERANCES ARE AS SHOWN TYP. AT THE TIME OF MFG.
 FRACTIONS = $\pm 1/16$
 DECIMAL .XX = ± 0.030
 DECIMAL .XXX = ± 0.005
 DO NOT SCALE DRAWING

DESIGNER	J.CROWLEY	DATE	12/15/2014
CHECKED	J.CROWLEY		
APPROVED	S.J.W.	DATE	12/17/14

		TITLE GPM PUMP & TRUCK 2500 USG ELLIP-T POLY TANK	
REV.	A	DWG. NO.	773-0080
SCALE	1:37	SHEET	10
		SHEET 1 of 8	

4

3

2

1

4

3

DWG. NO. 773-0080 REV. 2 A

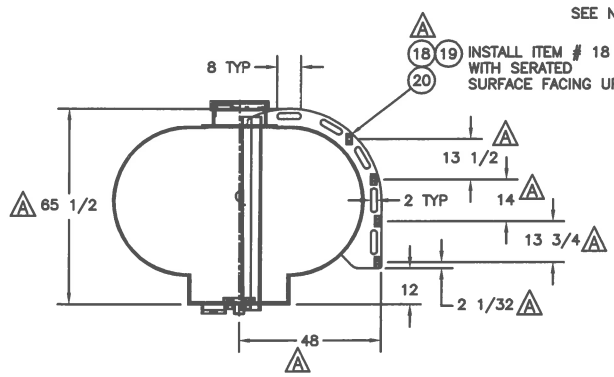
2

1

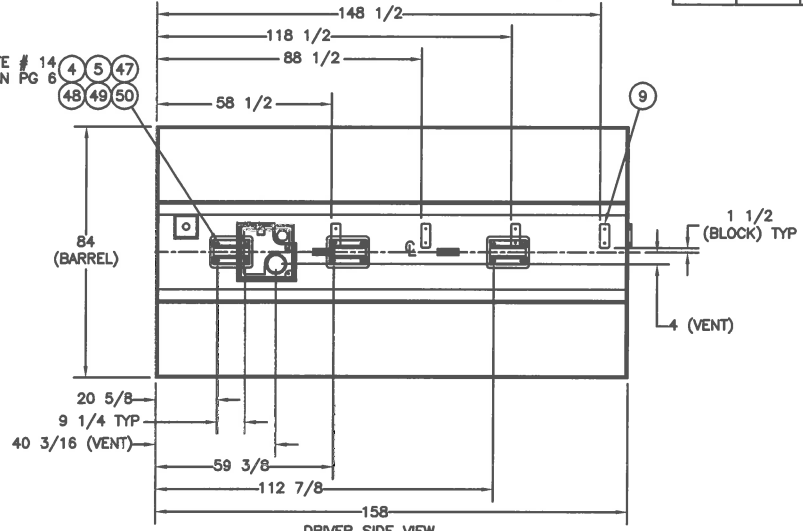
POLYTANK III

ZONE	REV	DESCRIPTION	DATE	APPROVED
A		SEE ECN # 7279	02/03/15	

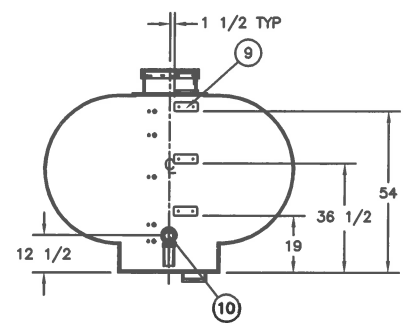
FRONT VIEW



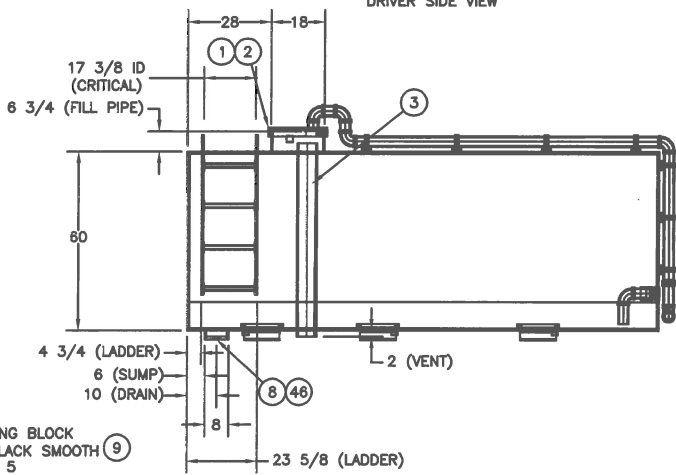
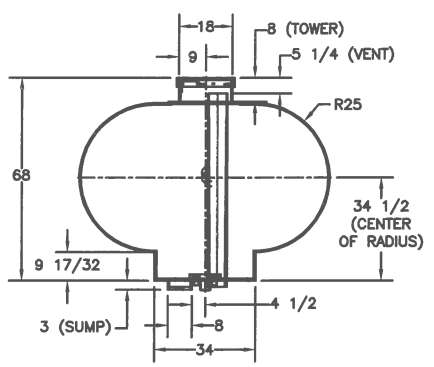
TOP VIEW (REAR FILL & SUCTION PIPE HIDDEN FOR CLARITY)



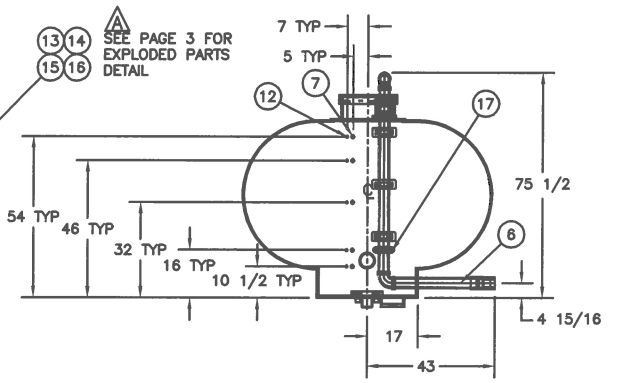
REAR VIEW (REAR FILL PIPE HIDDEN FOR CLARITY)



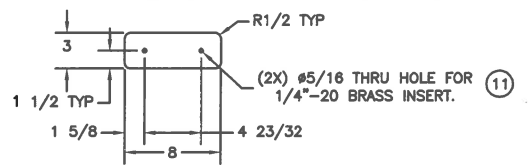
FRONT VIEW



REAR VIEW (REAR SUCTION HIDDEN FOR CLARITY)



FILL MOUNTING BLOCK MATERIAL: 1" BLACK SMOOTH QTY: 5



APPROVALS	DATE
DRAWN JCROWLEY	12/15/2014
CHECKED JCROWLEY	
APPROVED S.W.	12/17/14

GPM PUMP & TRUCK 2500 USG ELLIP-T POLY TANK	
SCALE: 1:40	SHEET 2 OF 8

4

3

DWG NO. 773-0080

REV 3 A

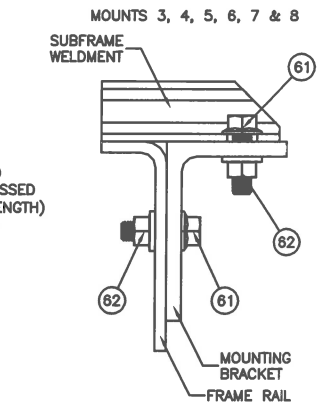
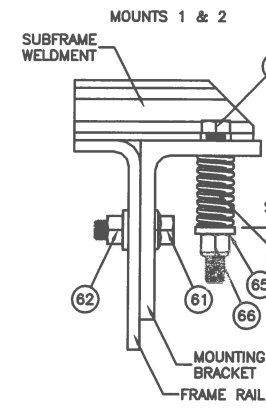
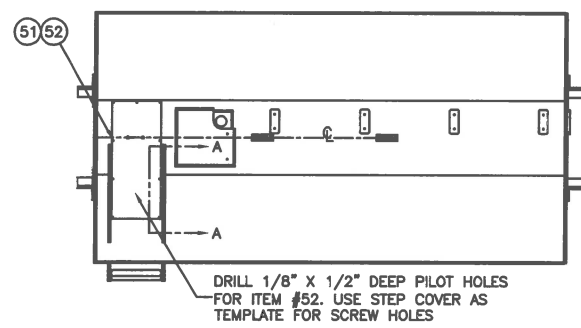
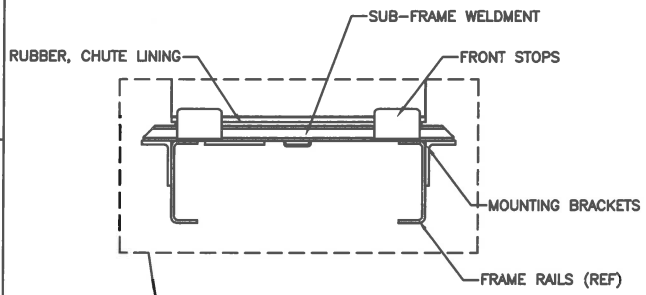
2

1

POLYTANK III

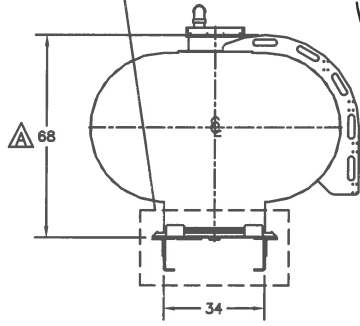
TOP VIEW
(REAR FILL & SUCTION PIPE HIDDEN FOR CLARITY)

TANK MOUNTING INSTALLATION DETAILS

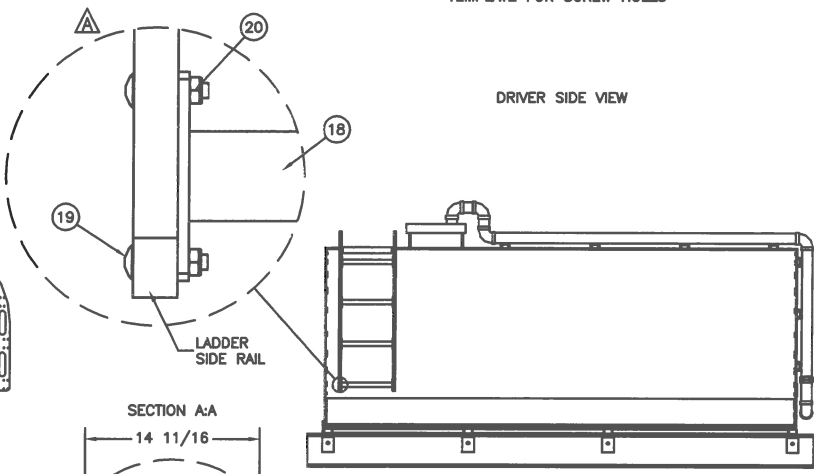


DETAILS ARE FOR CUSTOMER REFERENCE ONLY. BRACKETS TO BE INSTALLED BY CUSTOMER. SHIP BRACKETS AND HARDWARE LOOSE WITH TANK.

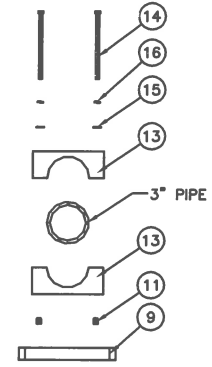
FRONT VIEW



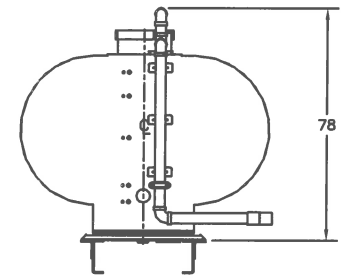
DRIVER SIDE VIEW



FILL CLAMP ASSEMBLY EXPLODED VIEW



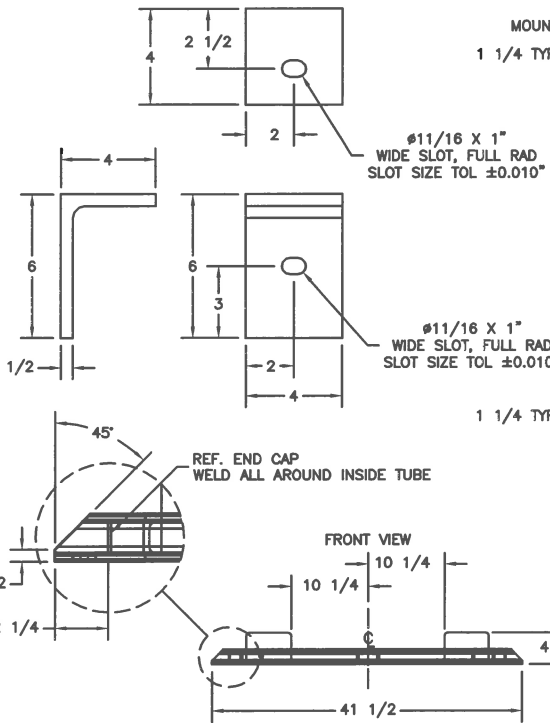
REAR VIEW



 UNITED PLASTIC FABRICATING		Dwg User	
		APPROVALS DATE TITLE DESIGNED JCROWLEY 12/15/2014 CHECKED JCROWLEY APPROVED S.W. 12/17/14	
GPM PUMP & TRUCK 2500 USG ELLIP-T POLY TANK		Approval Print DWG NO. 773-0080 REV. A	
SCALE 1:40	REP. NO.	CHG. NO. 10	SHEET 3 OF 8

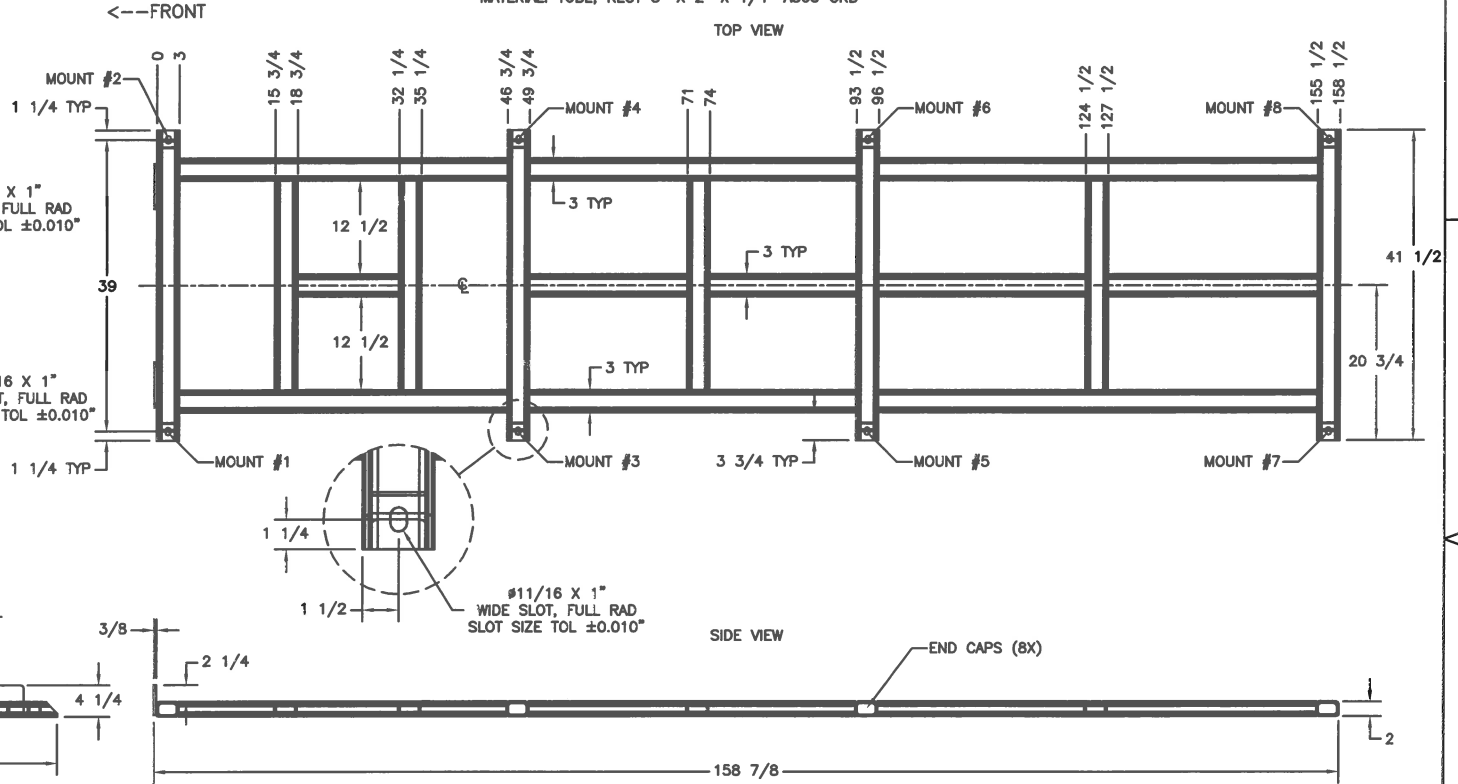
MOUNTING BRACKET DETAIL (53)

MATERIAL: 6" X 4" X 1/2" ANGLE, A36
QTY: 8



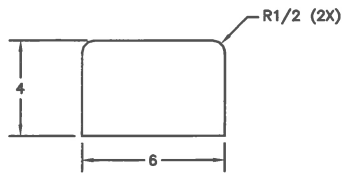
SUB-FRAME WELDMENT DETAIL (54)

MATERIAL: TUBE, RECT 3" X 2" X 1/4" A500 GRB



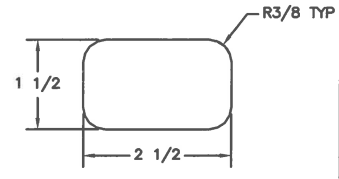
SUB-FRAME STOP DETAIL

MATERIAL: 3/8" HRS PLATE
QTY: 2



END CAP DETAIL

MATERIAL: 10 GA. HRS PLATE
QTY: 8



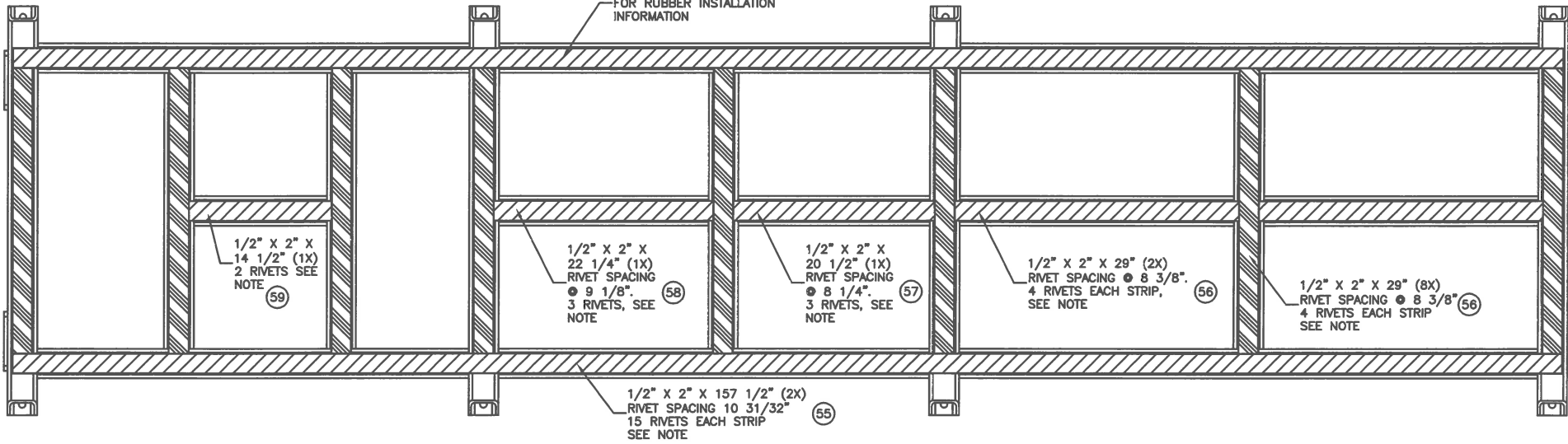
- NOTES:
- 1.) REMOVE ALL SHARP EDGES FROM ALL FABRICATED PARTS
 - 2.) PROPERLY PREPARE, PRIME, AND PAINT MOUNTING BRACKETS AND COMPLETED SUBFRAME USING AUTOMOTIVE GRADE URETHANE PAINT. COLOR TO BE GLOSSY BLACK
 - 3.) ITEM # 53 TO SHIP LOOSE WITH THE TANK.

APPROVALS		DATE	TITLE		END USER
DESIGNER	JCROWLEY	12/15/2014	GPM PUMP & TRUCK		
CHECKED	JCROWLEY		2500 USG ELLIP-T POLY TANK		
APPROVAL	SJW	12/17/14	SCALE	1:40	REV. A
			JOB NO.	773-0080	SHEET 4 OF 8

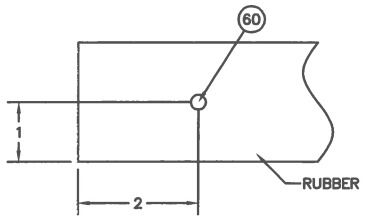
RUBBER INSTALLATION DETAILS

MATERIAL: 70D NEOPRENE BLACK RUBBER

REFERENCE 990-1117 PAGE 4
FOR RUBBER INSTALLATION
INFORMATION



- NOTES:
 1.) ALL RUBBER RIVETED TO TOP SURFACE OF SUBFRAME AFTER SUBFRAME IS PAINTED.
 2.) FIRST RIVET TO BE 2" IN FROM BOTH ENDS. ALL RUBBER PIECES ARE TO BE CENTERED ON THE WIDTH OF THE TUBE.



APPROVALS	DATE
DESIGNER JCROWLEY	12/15/2014
CHECKED JCROWLEY	
APPROVAL S.W	12/17/14

UPF
UNITED PLASTIC FABRICATORS

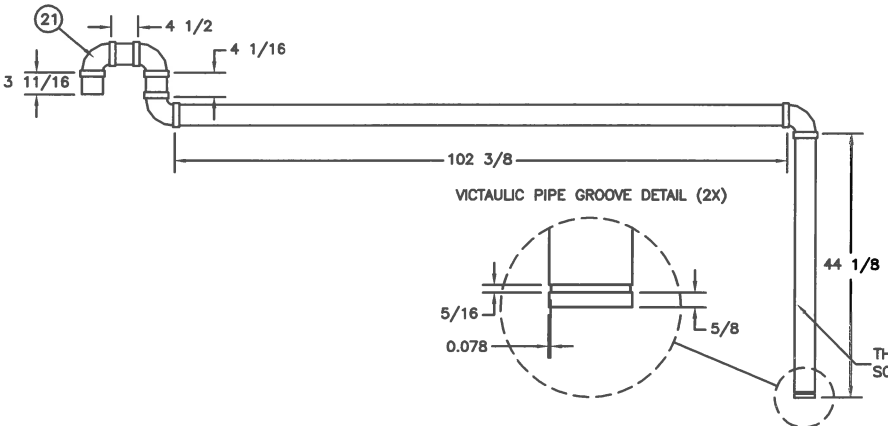
END USER

TITLE: GPM PUMP & TRUCK
2500 USG ELLIP-T POLY TANK

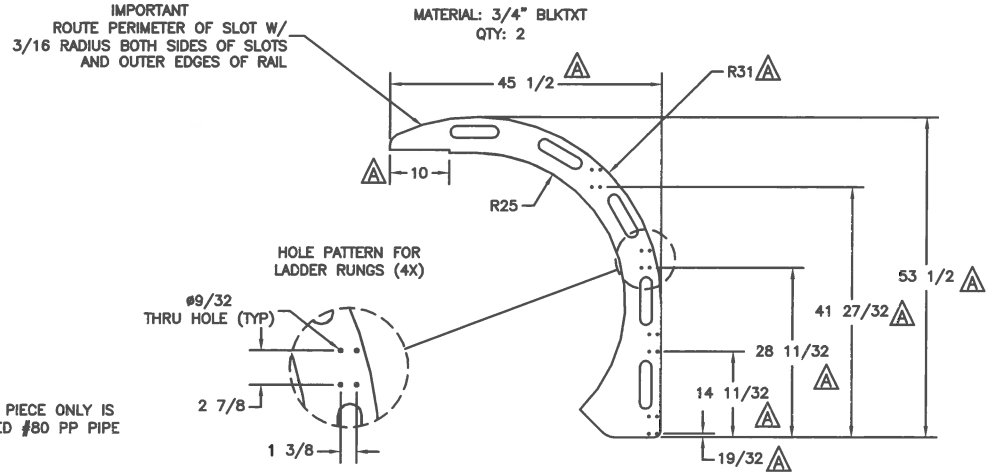
Approval Print

SIZE: B	DWG NO. 773-0080	REV. A
SCALE: 1:40	SHEET 10	SHEET 5 OF 8

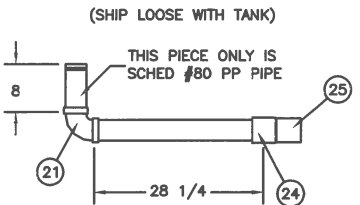
REAR FILL DETAIL ⑥



LADDER RAIL DETAIL

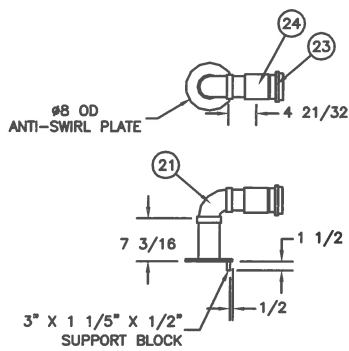


REAR FILL EXTENSION DETAIL



REMOVE THE BLACK FUSEAL CLAMP, BREAK OFF THE BLACK COLLAR SECTIONS AND CUT OFF FUSEAL PLUG FROM ALL FUSEAL FITTINGS USED ON EXTERIOR PIPING AFTER FUSING

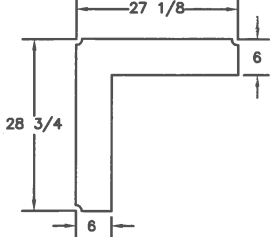
3" SUCTION DETAIL ⑩



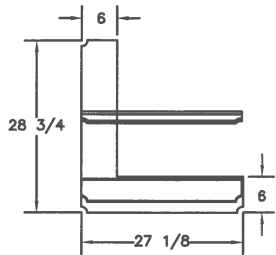
- NOTES:
- 1.) LEAVE OUTER ENDWALL STIFFENERS AND BARREL SIDE SUPPORTS OUT UNTIL WELD THAT JOINS BARREL TO END WALLS IS COMPLETE.
 - 2.) SIDE WALLS TO BE MACHINED FILM SIDE UP.
 - 3.) EXTRUSION WELD INSIDE WHERE HEADS MEET BARREL, USE 5/32" TRI-ROD ROOT PASS.
 - 4.) TOWER TO BE BLACK TEXTURED MATERIAL.
 - 5.) APPLY SERIAL NUMBER PER 990-1030.
 - 6.) ALL WELDS THAT ARE EXTERNALLY VISIBLE ARE TO BE SMOOTH AND WITHOUT VOIDS, SCRATCHES OR CRACKS WHEN VISUALLY INSPECTED UNAIDED BY MAGNIFICATION. FILLET WELDS SHOULD BE A SEAMLESS TRANSITION FROM ONE COMPONENT PART TO THE ADJOINING COMPONENT PART. NO SLAG OR FILLER IS PERMITTED TO BE MORE THAN 0.03 INCHES ABOVE NOR MAY THEY FALL BELOW THE ADJOINED SURFACE OF FLUSH WELDS.
 - 7.) MACHINED BUTT WELD TOLERANCE OF +/- 0.05" ON FINISHED SIDE.
 - 8.) ALL PIPE TO BE SCHEDULE 40 UNLESS OTHERWISE NOTED.
 - 9.) INSTALL BLOCK OFF PLATE BEFORE AND AFTER TOWER BAY, TRANSVERSE #1 & #2.
 - 10.) INSTALL PATCH PANELS ON ALL L-TUDE ACCESS HOLES.
 - 11.) DO NOT DISCARD CUT-OUTS FROM L-TUDES. SOME ARE USED AS BLOCK OFFS.
 - 12.) INSTALL ITEM # 46 WITH TEFLON TAPE AND SILICONE AFTER TEST. BE SURE TANK IS COMPLETELY EMPTY.
 - 13.) INSTALL LADDER AFTER TEST.
 - 14.) MOUNTING BRACKET AND HARDWARE QUANTITIES TO BE ADJUSTED FOR (3) TOTAL MOUNTING BRACKETS.

APPROVALS	DATE	TITLE
DESIGNED JCROWLEY	12/15/2014	GPM PUMP & TRUCK 2500 USG ELLIP-T POLY TANK
CHECKED JCROWLEY		
APPROVED S.W.	12/17/14	773-0080 A
SCALE 1:10		DATE 10
SHEET 6 OF 8		

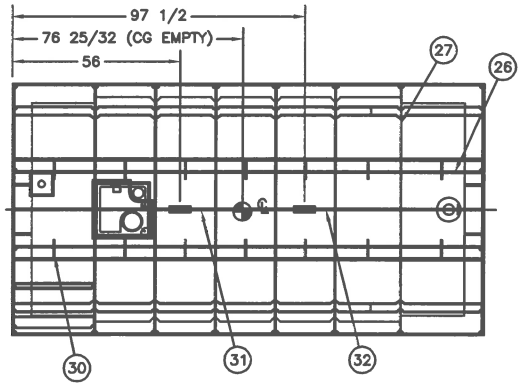
FRONT-PASSENGER CORNER FLANGE (MTL: 1/2" BLKSMT) 40



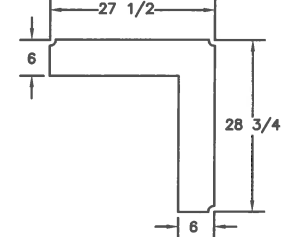
FRONT-DRIVER CORNER FLANGE (MTL: 1/2" BLKSMT) 39



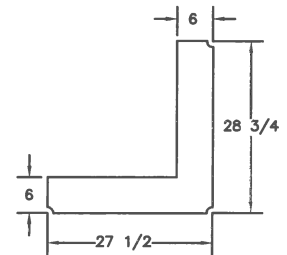
TOP VIEW



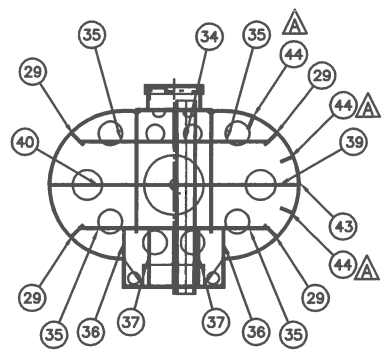
REAR-PASSENGER CORNER FLANGE (MTL: 1/2" BLKSMT) 42



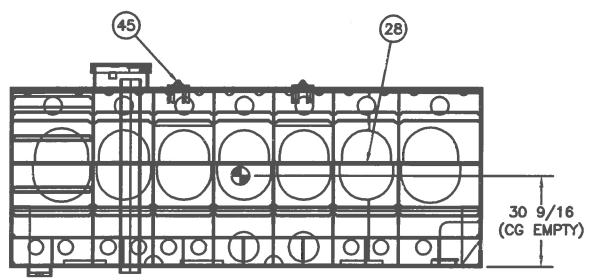
REAR-DRIVER CORNER FLANGE (MTL: 1/2" BLKSMT) 41



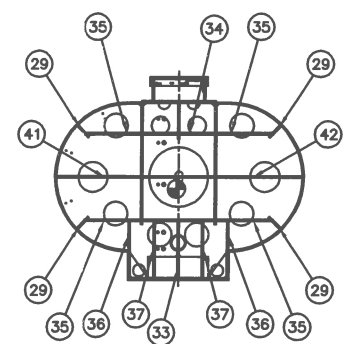
FRONT VIEW



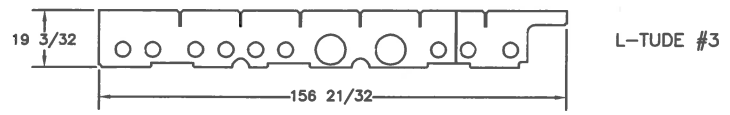
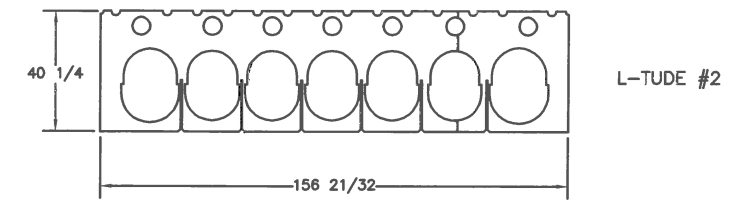
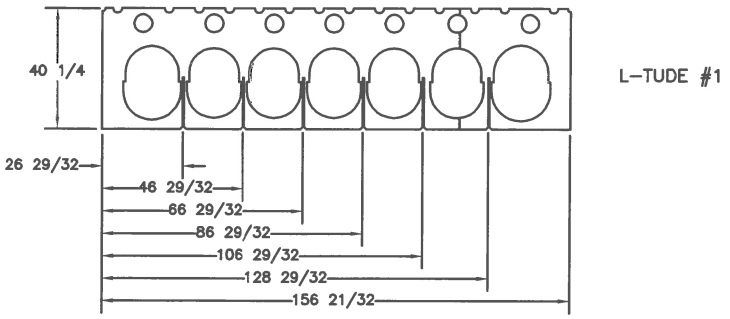
DRIVER SIDE VIEW



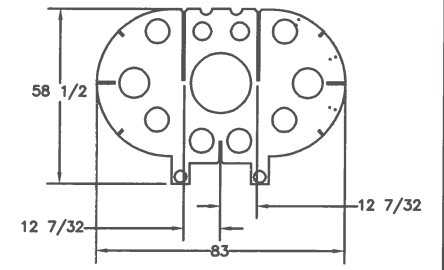
REAR VIEW



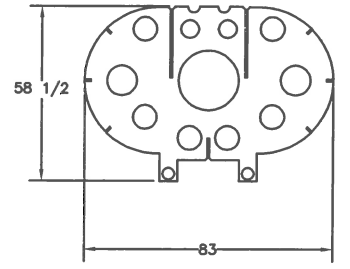
APPROVALS	DATE	TITLE
DESIGNED JCROWLEY	12/15/2014	GPM PUMP & TRUCK 2500 USG ELLIP-T POLY TANK
DRAWN JCROWLEY		
CHECKED		Support Print
APPROVAL SJW	12/17/14	773-0080 A
SCALE 1:40	REF NO.	10



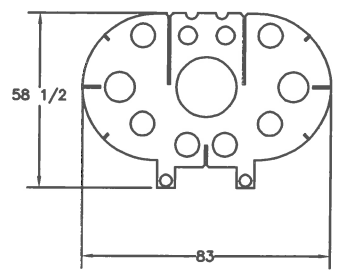
T-VERSE #1



T-VERSE #2,3,4,5



T-VERSE #6



APPROVALS		DATE	TITLE			
DESIGNER	JCROWLEY	12/15/2014	GPM PUMP & TRUCK 2500 USG ELLIP-T POLY TANK			
DRAWN	JCROWLEY		Partition Print			
CHECKED			SIZE	JOB NO.	DWG NO.	REV.
APPROVAL	SJW	12/17/14	B		773-0080	A
			SCALE	1:10	DATE	10
			SHEET 8 OF 8			