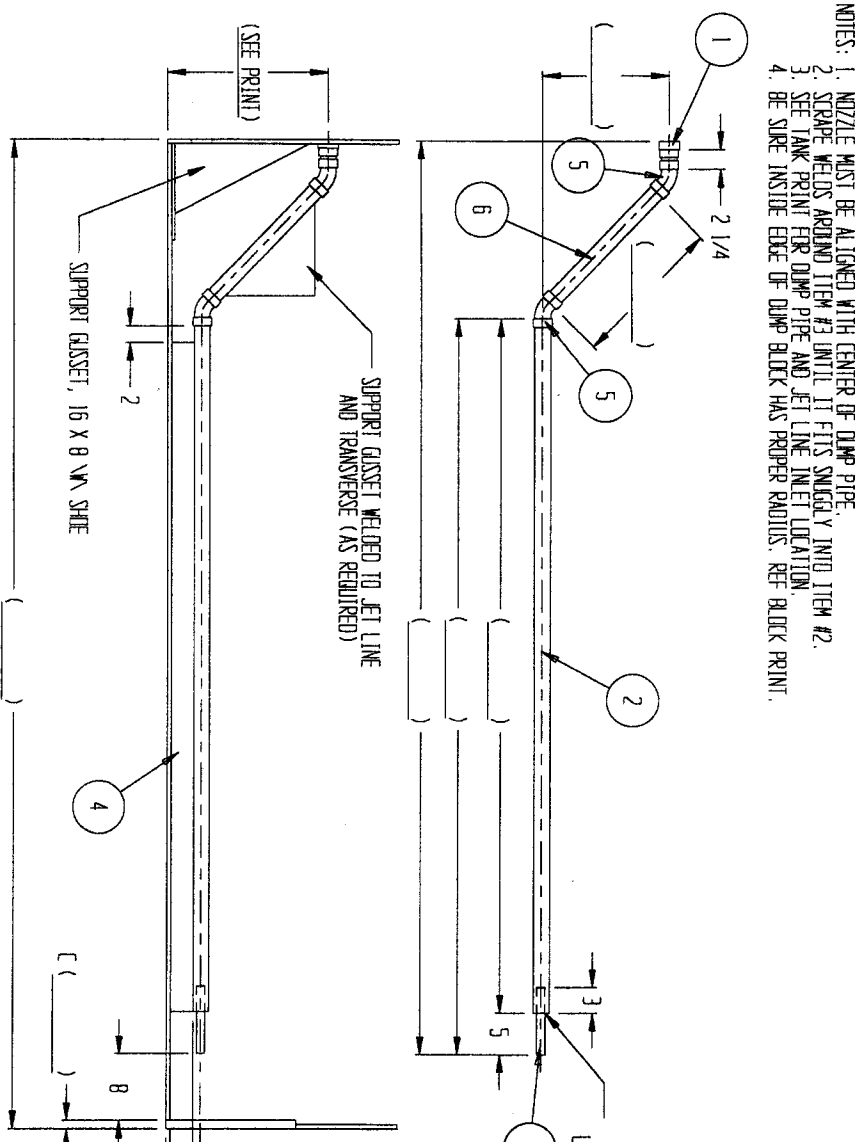


NOTES: 1. NOZZLE MUST BE ALIGNED WITH CENTER OF DUMP PIPE.
 2. STRAPE WELDS AROUND ITEM #3 UNTIL IT FITS SNUGLY INTO ITEM #2.
 3. SEE TANK PRINT FOR DUMP PIPE AND JET LINE INLET LOCATION.
 4. BE SURE INSIDE EDGE OF DUMP BLOCK HAS PROPER RADIUS. REF. BLOCK PRINT.



REV	DATE	DESCRIPTION
1	15 DEC 97	INITIAL ISSUE

REV	DATE	DESCRIPTION
1	15 DEC 97	INITIAL ISSUE

A = HEIGHT OF CENTERLINE OF DUMP
 B = A - 1 7/16
 C = BLOCK THICKNESS

MATERIAL:
 THESE DIMENSIONS AND SPECIFICATIONS ARE THE PROPERTY OF UNITED PLASTIC FABRICATING, INC. AND ARE NOT TO BE REPRODUCED OR TRANSMITTED IN ANY FORM OR BY ANY MEANS, ELECTRONIC OR MECHANICAL, INCLUDING PHOTOCOPYING, RECORDING, OR BY ANY INFORMATION STORAGE AND RETRIEVAL SYSTEM, WITHOUT THE WRITTEN PERMISSION OF UNITED PLASTIC FABRICATING, INC. ACCEPTANCE OF THIS COPY WILL BE CONSIDERED AS ACCEPTANCE OF THE SPECIFICATIONS AND DIMENSIONS AS SHOWN ON THIS PLASTIC FABRICATING.

ITEM PART NUMBER	DESCRIPTION	AS REQD
6 140-100-011	PIPE, P.P. - 1 1/2" SCH 80	2 EA
5 180-0040	GASKET, FIBERGLASS - 45" X 1 1/2"	2 EA
4 121-1001-013	SHEET, 1/2" P.P. - 8" X 10" X 10"	8 EA
3 140-1001-008	PIPE, P.P. - 1" SCH 80	8 EA
2 140-1001-011	PIPE, P.P. - 1 1/2" SCH 80	1 EA
1 180-0080	ADAPTER, FIBERGLASS - 1 1/2" W.P. X 1 1/2" P.P.	1 EA

UNITED PLASTIC FABRICATING, INC.
 "THE WORLD'S STANDARD CONTAINER"
 TITLE: INSTALLATION, JET LINE WITH OFFSET PIPING (1 1/2" SIZE) (GENERIC)
 DATE: 15 DEC 97
 DRAWN BY: E. BOOTH
 CHECKED BY: [Signature]
 SHEET NO: 1 OF 1
 PART NO: 980-0022