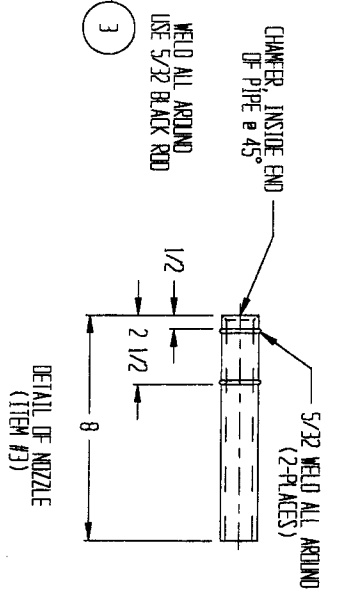
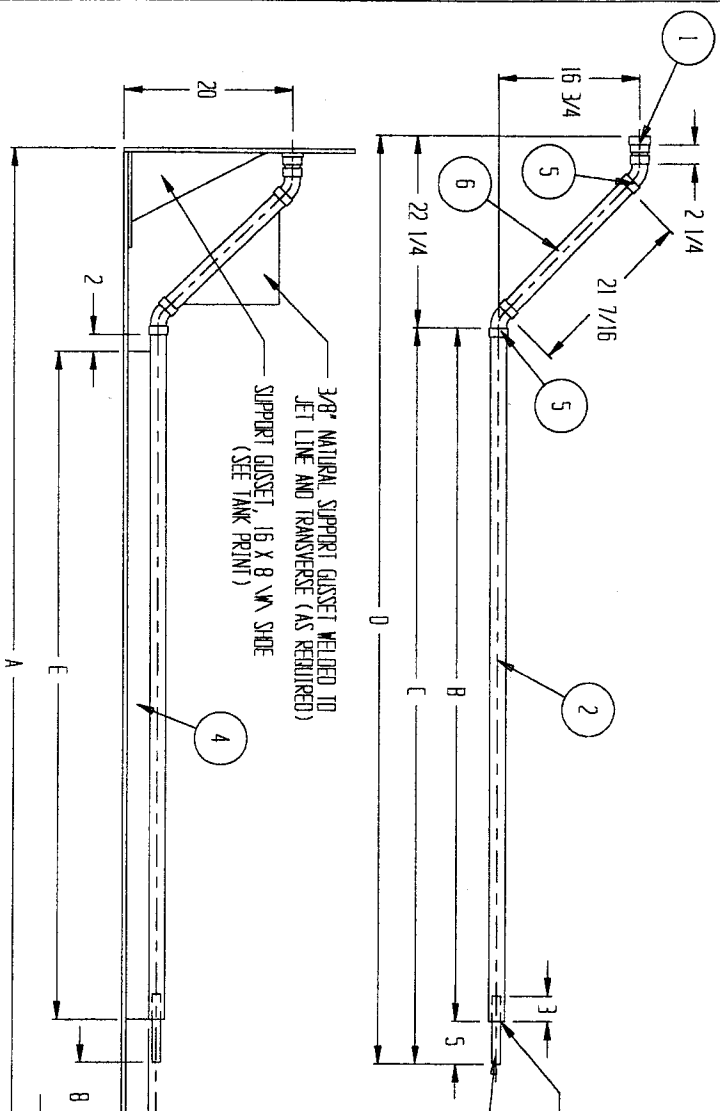


- NOTES: 1. NOZZLE MUST BE ALIGNED WITH CENTER OF DUMP PIPE.  
 2. STRAPE WELDS AROUND ITEM #3 UNTIL IT FITS SNUGLY INTO ITEM #2.  
 3. SEE TANK PRINT FOR DUMP PIPE AND JET LINE INLET LOCATION.  
 4. BE SURE INSIDE EDGE OF DUMP BLOCK HAS PROPER RADIUS. REF. BLOCK PRINT.



A = TANK BASE LENGTH  
 B = A - 36.25  
 C = B + 5  
 D = C + 22.25  
 E = B - 2.25

MATERIAL:

ITEM NO.	ITEM DESCRIPTION	QTY	UNIT	APPROVAL	USED ON
1	NOZZLE	1	EA		
2	STRAP	1	EA		
3	WELD	1	EA		
4	DUMP PIPE	1	EA		

ITEM NO.	ITEM DESCRIPTION	QTY	UNIT	APPROVAL	USED ON
5	PIPE, P.P. - 1 1/2\"/>				
6	ELBOW, FUSION - 45° X 1 1/2\"/>				
7	SHEET, 1/2\"/>				
8	PIPE, P.P. - 1\"/>				
9	PIPE, P.P. - 1 1/2\"/>				
10	ADAPTER, FUSION - 1 1/2\"/>				

ITEM NO.	ITEM DESCRIPTION	QTY	UNIT	APPROVAL	USED ON
11	PIPE, P.P. - 1 1/2\"/>				
12	ELBOW, FUSION - 45° X 1 1/2\"/>				
13	SHEET, 1/2\"/>				
14	PIPE, P.P. - 1\"/>				
15	PIPE, P.P. - 1 1/2\"/>				
16	ADAPTER, FUSION - 1 1/2\"/>				

UNITED PLASTIC FABRICATING, INC.  
 INSTALLATION, JET LINE WITH DUMP PIPING  
 (1 1/2" SIZE) (E-ONE)