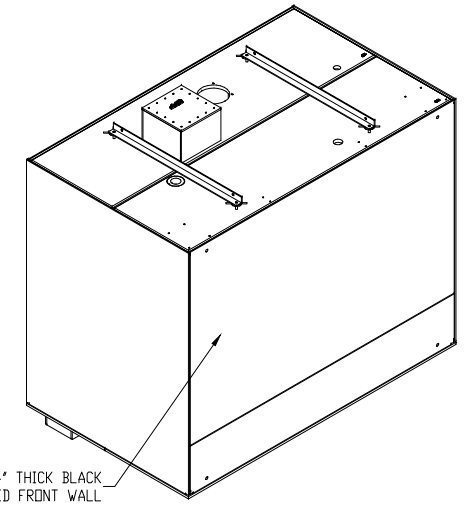
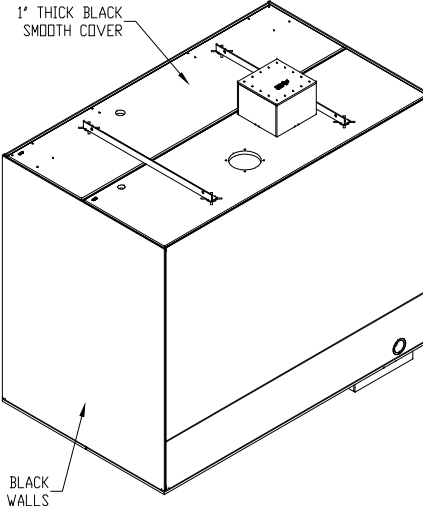
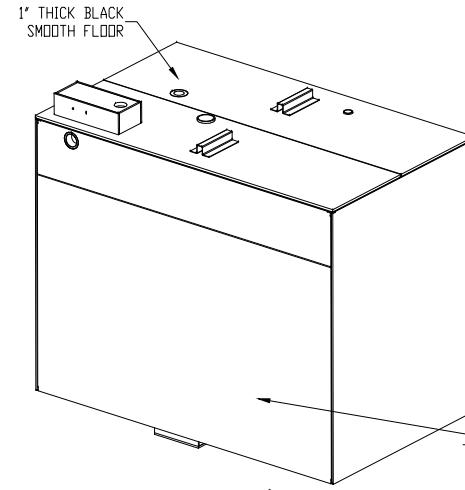


ITEM	Part No.	DESCRIPTION	QTY	UNITS	Ref No.	Ref Qty.
1	NA	3" NPT ADAPTER W/ DIP TUBE TANK SUCTION	1	ea	140-1001-003	0.49
2	NA	3" NPT TAPPED THRU HOLE TANK DRAIN	1	ea	NA	1.00
3	824-0160	MOUNTING BLOCK, ASSY 6 HOLE	2	ea	658-0013-000	2.00
4	824-0021	KIT-TNK, MTG. 6-BOLT	2	ea	658-0002-000	2.00
5	990-1148	4" VENT/OVERFLOW PIPE	1	ea	140-1001-004	6.94
8	NA	ASSEMBLY, FILL TOWER - W/BOLT-ON LID	1	ea	NA	1.00
18	NA	1/4" NPT TAPPED THRU HOLE TANK LEVEL GAUGE W/PLUG	1	ea	NA	0.00
19	140-1001-002	Ø2" X 75 3/4" WIRE CONDUIT	1	ea	140-1001-002	6.31
20	NA	1/2" NPT TAPPED THRU HOLE W/PLUG FOR CUSTOMER INSTALLED SIGHT GAUGE	4	ea	NA	0.00
21	162-0003	FILL, 1" FNPT HALF COUPLING	1	ea	162-0003-000	0.50
22	200-0019-005	INSERT, BRASS - 5/16"-18	4	ea	212-0019-005	4.00
23	NA	FILL PORT, Ø8 1/4" THRU W/(4) Ø3/8"x1/2" DP. HOLES EQ. SP. DN A Ø9 1/2" B.C. FOR ITEM #22	1	ea	NA	0.00
24	NA	Ø5/16 X 1/2 DEEP HOLE FOR ITEM #25 (DRILLED BY HAND)	12	ea	NA	0.00
25	200-0019-004	INSERT, BRASS, 1/4"-20	12	ea	212-0019-004	12.00
26	NA	THRU TANK FILL/CHARGED SLEEVE, 2 1/2" NPT ADAPTER BOTH ENDS (FLUSH @ TOP & BTM)	1	ft	140-1001-013	5.66
27	203-0022	GASKET, NEDPRENE - BLACK	1	sqft	203-0022-000	1.40
30	200-0111	SCREW, HI-LD HEX #14x1 1/8"	16	ea	200-0111-000	16.00
31	NA	USE A TORQUE VALUE OF 30 IN/LBS ON ALL 1/4"-20 BRASS INSERTS	1	ea	NA	0.00
32	NA	USE A TORQUE VALUE OF 60 IN/LBS ON ALL 5/16"-18 BRASS INSERTS	1	ea	NA	0.00
34	164-0005-001	PLUG, 1/4"	1	ea	164-0005-001	1.00
35	164-0005-002	PLUG, 1/2"	4	ea	164-0005-002	4.00

ITEM	Part No.	DESCRIPTION	QTY	UNITS	Ref No.	Ref Qty.
9	160-1032	3" ENFIELD 90° ST ELBOW LEAVE MIN 1 1/2" CLEARANCE FROM SUMP FLOOR	1	ea	160-1032-000	1.00
10	824-0277	ADAPTER, 3" NPTF X 3" PIPE STUB	1	ea	170-0277-001	1.00
11	160-1082	3" ENFIELD COUPLING	2	ea	160-1082-000	2.00
13	NA	1/2" DRAIN HOLE	1	ea	NA	0.00
14	321-0001	TYPE A STEEL	2	ea	NA	2.00
16	990-1008	ANTI-SWIRL PLATE INSTALLATION	1	ea	NA	0.00
17	140-1001-002	LEG, PIPE - 1 1/2" DR 2" PIPE IN EITHER SCH 40 OR SCH 80 WALL THICKNESS. LENGTH OF LEG 2 7/8"	1	ea	140-1001-002	0.24
15	824-0166	LIFTING PEG F: 296 LB	4	ea	180-0166-002	4.00
28	824-0175-001	ADAPTER, 2 1/2" NPTF X 3" PIPE STUB	2	ea	170-0657-000	2.00
33	301-0004	ANGLE IRON 2"x2"x1/4" (3.19 LB/FT) ASTM A36 HRS	2	ea	300-0004-000	7.58

PALLET TO BE CONSTRUCTED AS TO PROTECT SUMP FROM FORK LIFT DAMAGE



REVISIONS				
ZONE	REV	DESCRIPTION	DATE	APPROVED
A	SEE ECN C-8467		11/21/18	RCM
B	SEE ECN C-8541		01/04/2019	RCM
C	SEE ECN C-8908		01/02/2020	MM
D	SEE ECN C-9005		03/03/2020	OM
E	SEE ECN C-9050		05/07/2020	RCM
F	SEE ECN C-9289		01/07/2021	RCM
G	SEE ECN C-9555		08/19/2021	RC
H	SEE ECN C-9837		04/19/2022	RC
I	SEE ECN C-9867		05/12/2022	RC

TANK TO BE BUILT TO CURRENT UPF MANUFACTURING STANDARDS.

ADDITIONAL UPF STANDARDS APPLICABLE TO THIS TANK:

CONTRACT NO.		2330480003	
REV 0		REV 0	
APPROVALS	DATE	TITLE	
DESIGNER	06/15/2018	Gradall Industries, Inc.	
DRAWN	06/15/2018	1600 Gal Wetside POLY-Tank	
CHECKED	06/28/2018	ISO View Print	
APPROVAL	RCM	SCALE	1:1



END USER

UNLESS OTHERWISE SPECIFIED, DIMENSIONS ARE IN INCHES TOLERANCES ARE AT AMBIENT TEMP. AT THE TIME OF MFG.  
 FRACTIONS = ± 1/16 DECIMAL .XX = ± .030  
 DECIMAL .XXX = ± .005

DO NOT SCALE DRAWING

MATL	AS NOTED	<small>THESE DRAWINGS AND SPECIFICATIONS ARE THE EXCLUSIVE PROPERTY OF UNITED PLASTIC FABRICATING, INC. ISSUED IN STRICT CONFIDENCE AND ARE NOT TO BE DISCLOSED IN WHOLE OR IN PART TO ANY OTHER PARTY AND THAT IT SHALL NOT BE COPIED IN ANY FORM WITH OUT THE PRIOR WRITTEN PERMISSION OF UNITED PLASTIC FABRICATING, INC. ACCEPTANCE OF THIS COPY WILL BE CONSIDERED AS ACCEPTANCE OF THE FOREGOING CONDITION. POLY-TANK IS A REGISTERED TRADEMARK OF UNITED PLASTIC FABRICATING</small>
COVS		
GALLONS	FLUSH/DROP IN	
LITERS	1617	
IMP GALS		
CALC WGT FULL (LBS.)		



15.22 - 2022-05-09

4

3

DWG NO. 770-3690

SH 2

REV 1

2

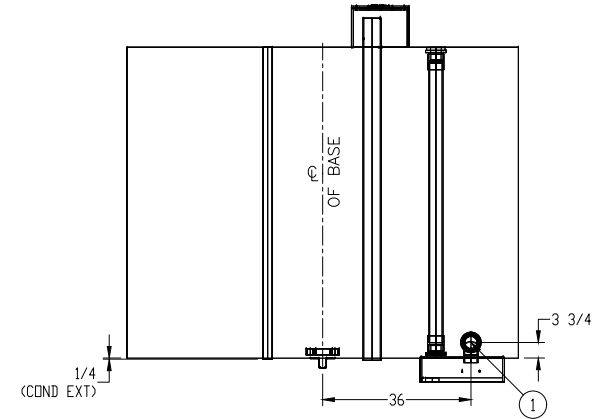
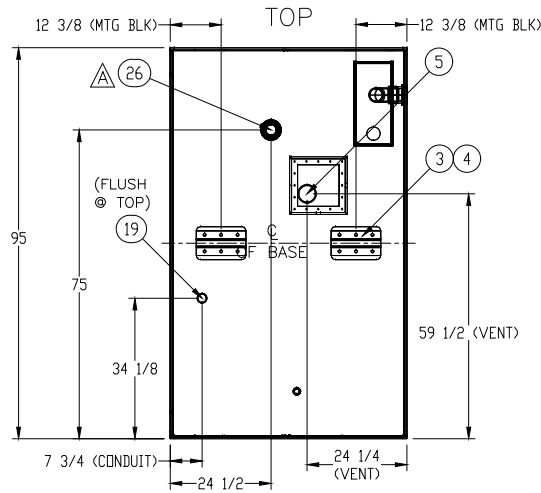
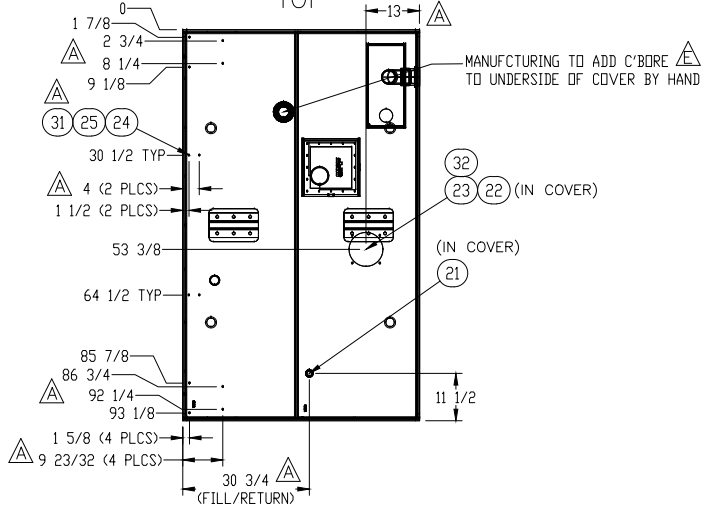
1

POLYTANK III

TOP

TOP

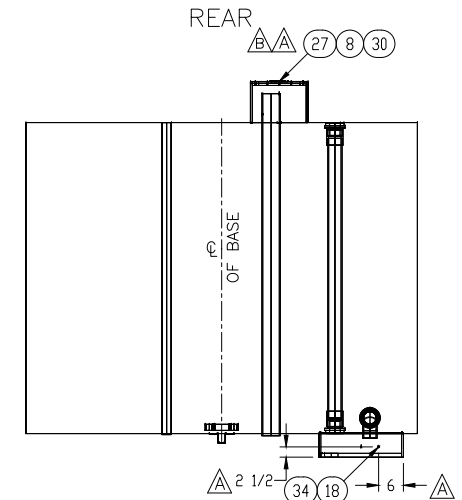
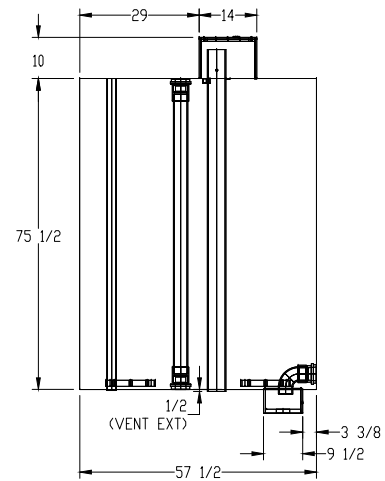
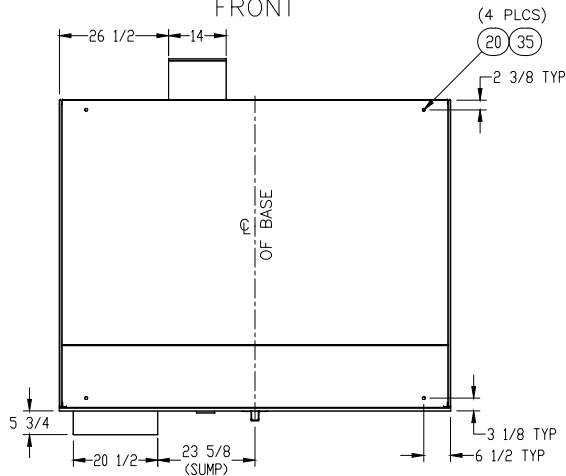
REAR



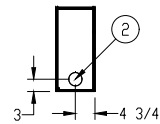
FRONT

SIDE

REAR



SUMP DETAIL TOP VIEW  
---FRONT



\*SEE SHEET 3 FOR NOTES\*



END USER

APPROVALS		DATE		TITLE	
DESIGNER	Jon Stevens	06/15/2018	Gradall Industries, Inc. 1600 Gal Wetside POLY-Tank		
DRAWN	Jon Stevens x256	Water Print			
CHECKED		SIZE	JOB NO.	DWG NO.	REV.
APPROVAL	RM	B		770-3690	I
APPROVAL		SCALE	REF NO.	CALC WGT	ACT WGT
		1:1		1181	
				SHEET	2 OF 5

4

3

2

1

4

3

DWG NO.

770-3690

SH

3

REV

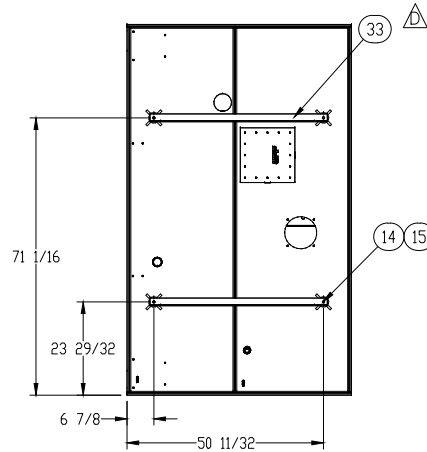
1

2

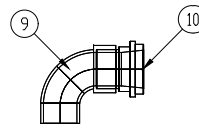
1

POLYTANK III

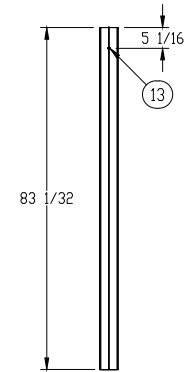
## LIFTING DETAIL



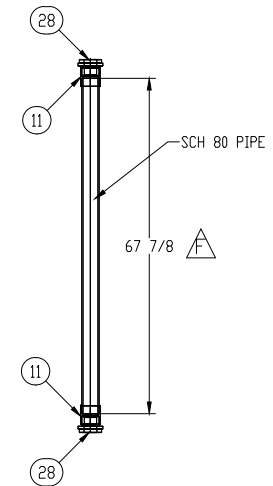
## SUCTION PIPE



## VENT/OVERFLOW



## THRU TANK FILL DETAIL (26)



## NOTES:

- 1.) ALL FINISHED EDGES TO HAVE 1/8" RADIUS.
- 2.) SMOOTH ALL EXTERIOR WELDS.
- 3.) FINISHED PRODUCT TO BE PAINTED BY CUSTOMER
- 4.) PROTECT SIDES DURING MANUFACTURING
- 5.) ALL EXTERNAL TANK SHELL SIDES SHALL BE FREE OF MATERIAL AND MFG. DEFECTS.
- 6.) TANK SIDES, FRONT WALL & REAR WALL TO BE 3/4" THK.
- 7.) EXTRUSION WELD SHELL EXTERIOR AS NOTED
- 8.) ONLY MACHINED BUTT WELDS PERMITTED ON TANK SHELL AS SHOWN WITH A BUTT WELD TOLERANCE OF  $\pm 0.05"$  ON FINISHED SIDE.
- 9.) APPLY FOIL TAPE TO 3/4" & 1" MATERIAL AS REQUIRED FOR SPARK TEST
- 10.) TANK SIDES TO CAP ENDS.
- 11.) PEGS INITIALLY EXTEND 1/16" ABOVE COVERS. AFTER PEGS ARE WELDED TO COVER, MACHINE PEGS TO BE FLUSH WITH COVER.
- 12.) CL MEASURED FROM BASE OF TANK
- 13.) LABEL LOCATION, REF 990-1027
- 14.) APPLY SERIAL NUMBER PER 990-1030
- 15.) ETCHING LOCATION, REF SHEET 2 OF 990-1028
- 16.) MOUNTING BLOCK ASSEMBLY MUST BE WELDED TO THE INTERNAL TANK STRUCTURE. DO NOT WELD ANY COMPONENT TO THE MOUNTING BLOCK COVER PLATE
- 17.) ALL PIPE TO BE SCHEDULE 40 UNLESS OTHERWISE NOTED
- 18.) ALL WELDS THAT ARE EXTERNALLY VISIBLE ARE TO BE SMOOTH AND WITHOUT VOIDS, SCRATCHES OR CRACKS WHEN VISUALLY INSPECTED UNAIDED BY MAGNIFICATION. FILLET WELDS SHOULD BE A SEAMLESS TRANSITION FROM ONE COMPONENT PART TO THE ADJOINING COMPONENT PART. NO SLAG OR FILLER IS PERMITTED TO BE MORE THAN 0.03 INCHES ABOVE NOR MAY THEY FALL BELOW THE ADJOINING SURFACE OF FLUSH WELDS.
- 19.) TANK FLOOR REQUIRES POCKETS TO ACCEPT MOUNTING BLOCKS SO THAT MOUNTING HARDWARE CAN ATTACH TO TANK WITH PROPER BOLT THREAD ENGAGEMENT

APPROVALS		DATE	TITLE			
DESIGNER	Jon Stevens	06/15/2018	Gradall Industries, Inc. 1600 Gal Wetside POLY-Tank			
DRAWN	Jon Stevens x256		Details Print			
CHECKED			SIZE	JOB NO.	DWG NO.	REV.
APPROVAL	RM	06/28/2018	B		770-3690	I
			SCALE	REF NO.	CALC WGT	ACT WGT
			1:1		1181	
						SHEET 3 OF 5

4

3

2

1

4

3

DWG NO. 770-3690

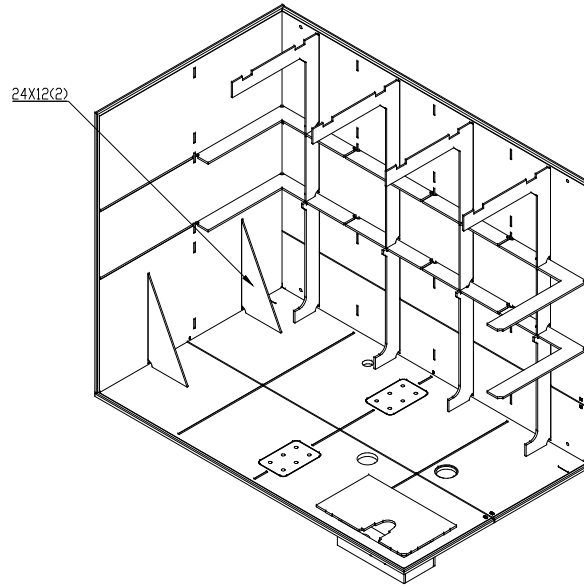
SH 4 REV 1

2

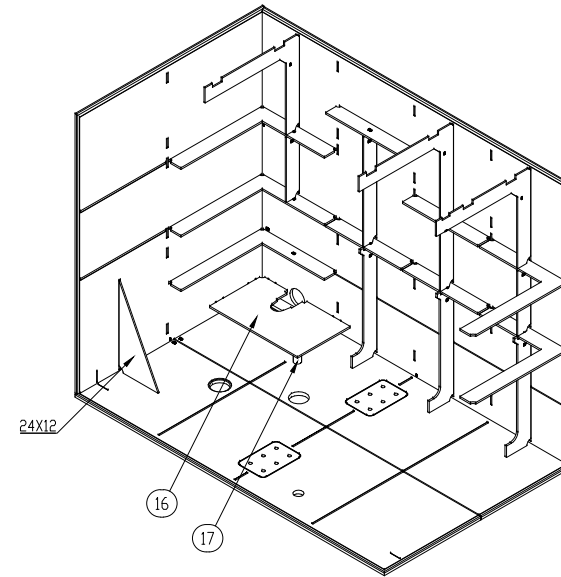
1

POLYTANK III

△ REAR PASSENGER



△ FRONT DRIVER



APPROVALS		DATE	TITLE		
DESIGNER	Jon Stevens	06/15/2018	Gradall Industries, Inc.		
DRAWN	Jon Stevens x256		1600 Gal Wetside POLY-Tank		
CHECKED			Gusset Print		
APPROVAL	RM	06/28/2018	SIZE B	JOB NO.	DWG NO. 770-3690
			SCALE 1:1	REF NO.	CALC WGT 1181
					ACT WGT
					SHEET 4 OF 5

4

3

2

1

4

3

DWG NO.

770-3690

SH 5

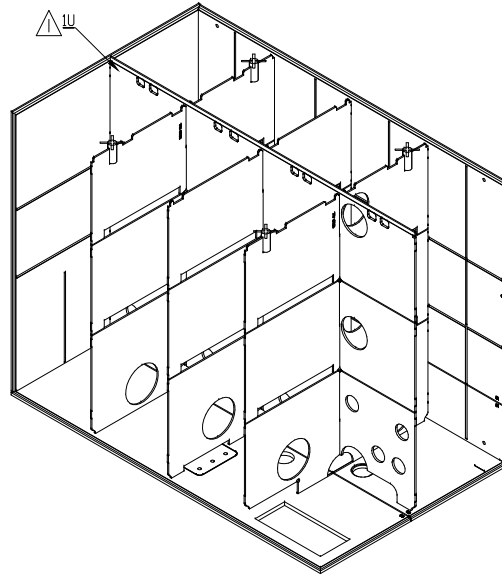
REV 1

2

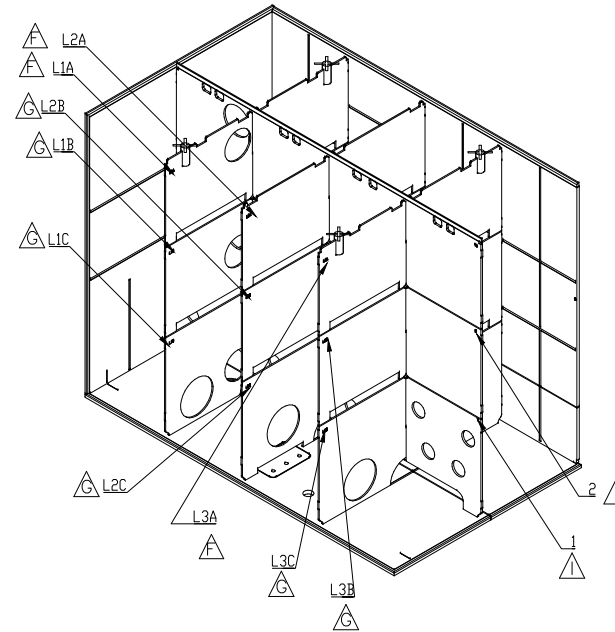
1

POLYTANK III

### REAR PASSENGER



### FRONT DRIVER



APPROVALS		DATE	TITLE	
DESIGNER	Jon Stevens	06/15/2018	Gradall Industries, Inc.	
DRAWN	Jon Stevens x256		1600 Gal Wetside POLY-Tank	
CHECKED			Support Print	
APPROVAL	RM	06/28/2018	SIZE B	JOB NO.
			DWG NO.	770-3690
			SCALE 1:1	REV. I
			REF NO.	CALC WGT 1181
				ACT WGT
				SHEET 5 OF 5

4

3

2

1